

SENSATION

AIR CLEANER PARTS LIST

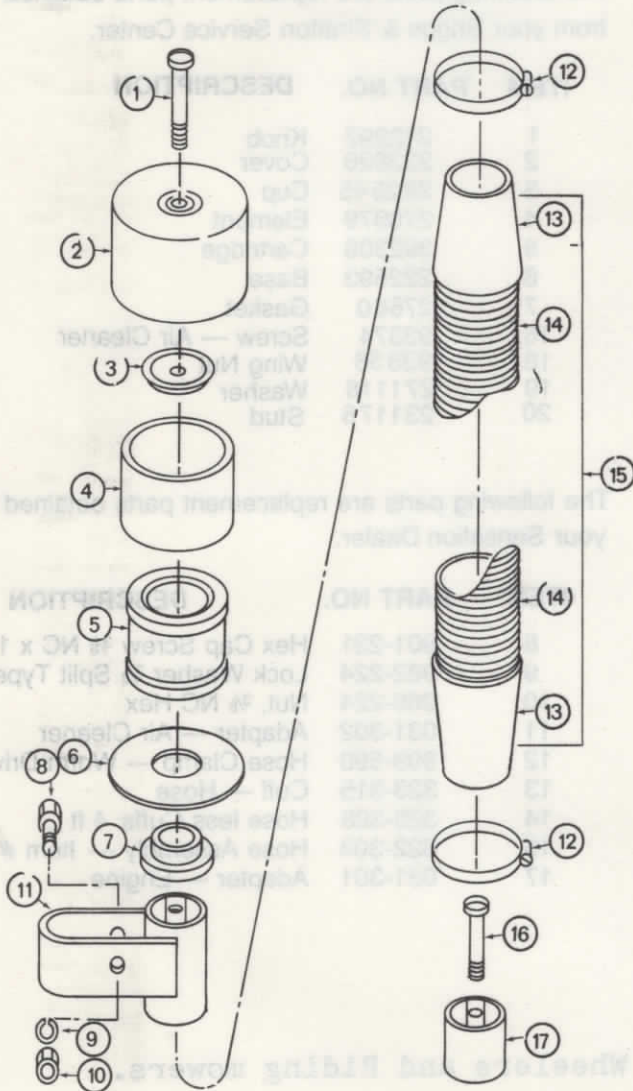
MODEL 3XAC-0

The following parts are replacement parts obtained from your Briggs & Stratton Service Center.

ITEM	PART NO.	DESCRIPTION
2	222626	Cover
3	222594	Cup
4	270979	Element
5	392308	Cartridge
6	222593	Base
7	27660	Gasket
16	93374	Screw — Air Cleaner

The following parts are replacement parts obtained from your Sensation Dealer.

ITEM	PART NO.	DESCRIPTION
1	999-589	Screw # $1\frac{1}{32}$ x $3\frac{3}{8}$ Pan Slotted
8	901-231	Hex Cap Screw $\frac{3}{8}$ NC x $1\frac{1}{2}$
9	982-224	Lock Washer $\frac{3}{8}$ Split Type
10	960-224	Nut, $\frac{3}{8}$ NC Hex
11	031-302	Adapter — Air Cleaner
12	999-590	Hose Clamp — Worm Drive
13	323-315	Cuff — Hose
14	323-311	Hose less Cuffs 3 ft
15	322-301	Hose Assembly — Item #14 & #13
17	031-301	Adapter — Engine

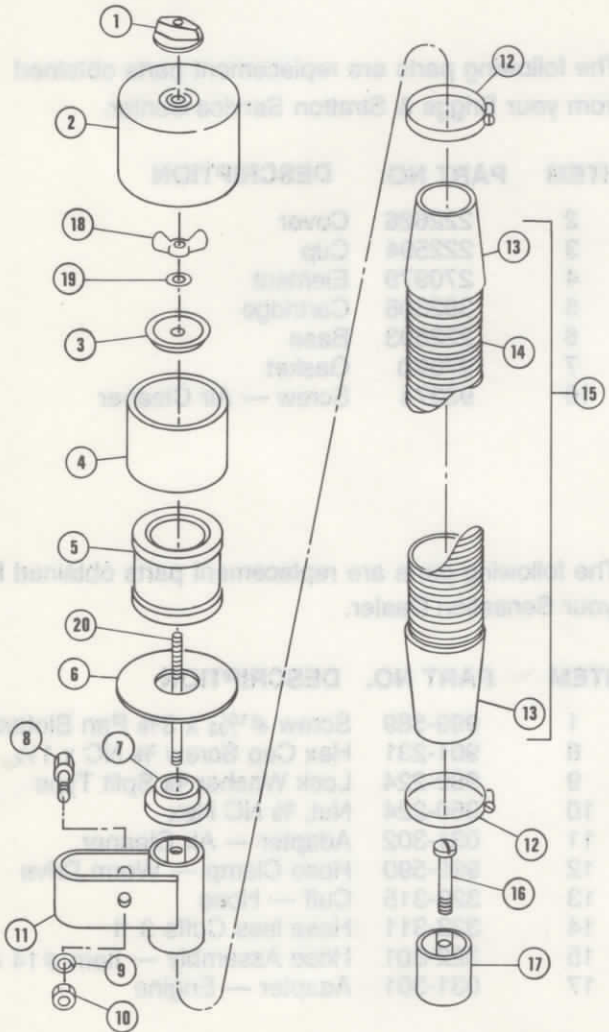


Fits all models except Hi Wheelers, Self Propelled Mowers, and Riders.

SENSATION

AIR CLEANER PARTS LIST

MODEL 3XAC-2



The following parts are replacement parts obtained from your Briggs & Stratton Service Center.

ITEM	PART NO.	DESCRIPTION
1	212292	Knob
2	222626	Cover
3	222845	Cup
4	270979	Element
5	392308	Cartridge
6	222593	Base
7	27660	Gasket
16	93374	Screw — Air Cleaner
18	93856	Wing Nut
19	271118	Washer
20	231176	Stud

The following parts are replacement parts obtained from your Sensation Dealer.

ITEM	PART NO.	DESCRIPTION
8	901-231	Hex Cap Screw $\frac{3}{8}$ NC x 1 $\frac{1}{2}$
9	982-224	Lock Washer $\frac{3}{8}$ Split Type
10	960-224	Nut, $\frac{3}{8}$ NC Hex
11	031-302	Adapter — Air Cleaner
12	999-590	Hcse Clamp — Worm Drive
13	323-315	Cuff — Hose
14	323-328	Hose less Cuffs 4 ft
15	322-303	Hose Assembly — Item #14 & #13
17	031-301	Adapter — Engine

Fits all models except Hi Wheelers and Riding mowers.

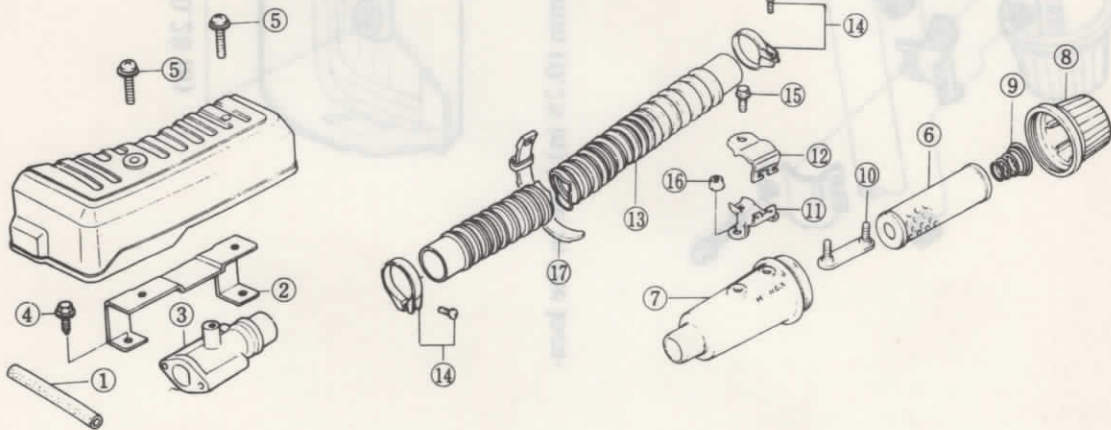
To use this kit on models other than the 21S4 the hose must be shortened. Simply unscrew one of the cuffs clockwise and cut off 12" from the hose. Replace the cuff by screwing it on counter-clockwise.

HONDA

MODEL 3XAC-1

AIR CLEANER KIT

Fits 11L7 & 11J7 Series Models

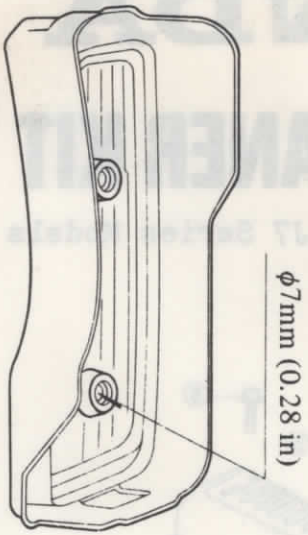


The following parts are replacement parts obtained from your Honda dealer.

Item	Honda Code	Honda Part No.	Description
1	75142	15721-888-692	Breather Tube
2	80252	17232-888-690	Carburetor Cover Stay
3	80250	17411-888-810	Tube Connecting Joint
4	63684	90013-883-000	Flange Bolt 6 x 12
5	80253	93891-0602508	Washer, Screw 6 x 25
6	75403	17211-888-692	Air Cleaner Element
7	75404	17220-888-691	Air Cleaner Case
8	75405	17231-888-691	Air Cleaner Cap
9	75406	17233-888-691	Set Spring
10	75407	17234-888-691	Air Cleaner Set Plate Comp.
11	75408	17236-888-691	Air Cleaner Bracket A
12	75410	17239-888-690	Air Cleaner Bracket B
13	75409	17237-888-691	Air Cleaner Hose
14	22035	17255-041-000	Air Cleaner Connecting Band
15	49665	95700-060-1600	Flange Bolt 6 x 16
16	47162	94050-05000	Flange Nut 6 mm
17	28814	95014-62300	Wire Band

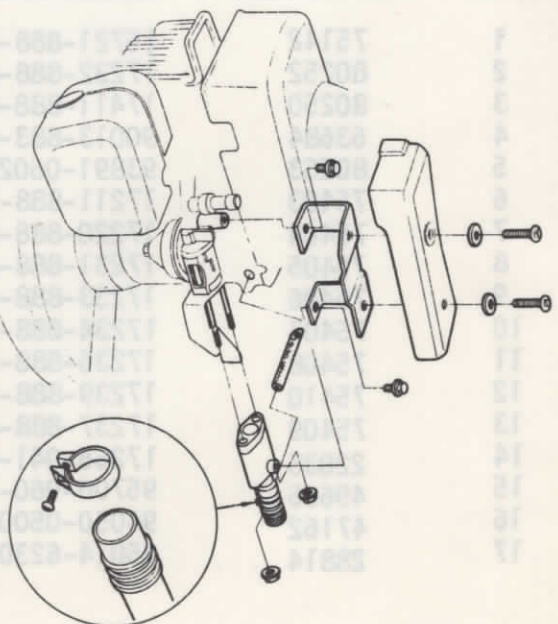
SET-UP INSTRUCTIONS

1



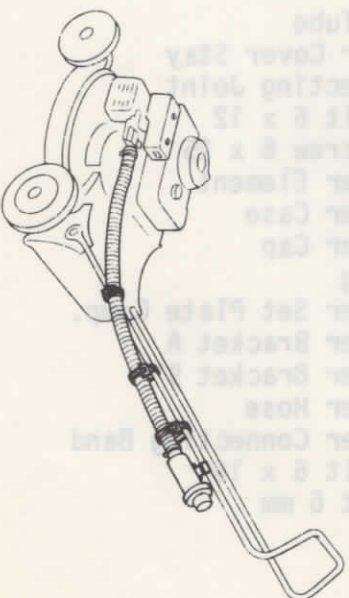
1. Remove the air cleaner cover and drill a $\phi 7\text{mm}$ (0.28 in) hole in the location shown.

2

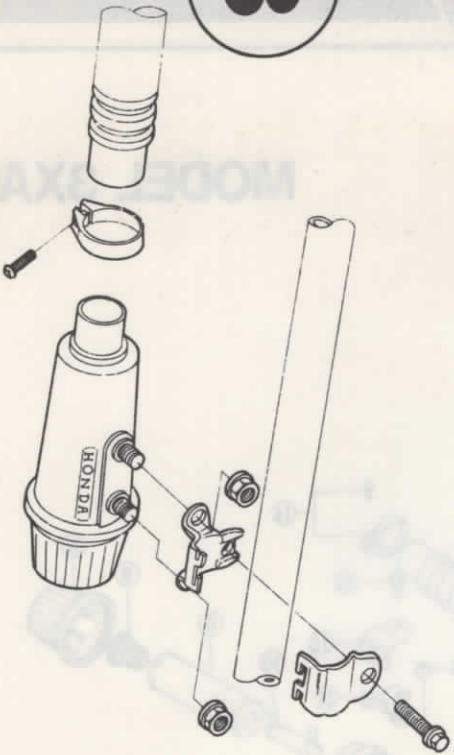


2. Loosen two 6mm nuts and remove the air cleaner case.
3. Install the breather tube (square cut end) on the connecting joint and install the joint on the carburetor with two 6mm nuts.
4. Install the breather tube (angled end) in the cylinder barrel as far as it will go.
5. Install the cover stay and the cover.

4



3



6. Connect the snorkel air cleaner to the hose and bind it with a tube band.
7. Install the snorkel to the handle as illustrated.

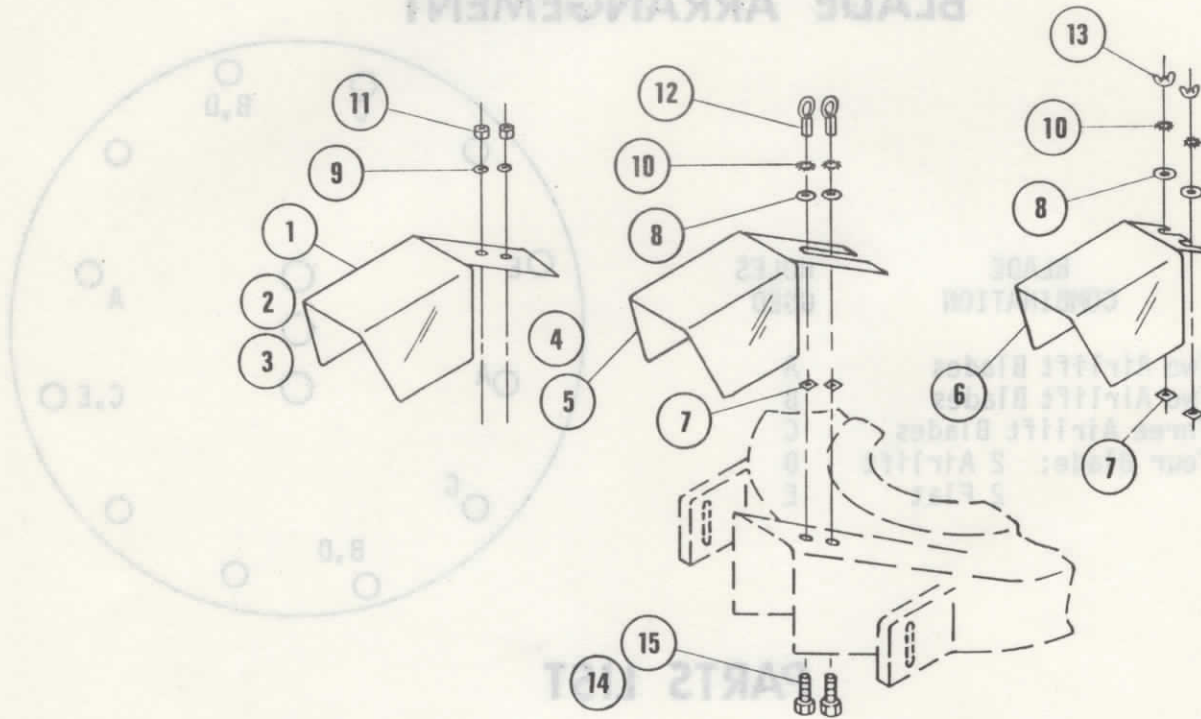
8. Clamp the hose to the handle with three wire bands.

SENSATION

CHUTE DEFLECTOR KIT

Models: 3XCD-0
3XCD-1
3XCD-2
3XCD-3
3XCD-4
3XCD-5

Form No. 113-919



Ref. No.	Part No.	Description	Model Used On					
			3XCD-0	3XCD-1	3XCD-2	3XCD-3	3XCD-4	3XCD-5
*1	031-102	Chute Deflector for 11L, 11G	X					
*2	031-103	Chute Deflector for 19L, 19G		X				
3	031-105	Chute Deflector for 14L			X			
4	031-102	Chute Deflector for 11L, 11G				X		
5	031-103	Chute Deflector for 19L, 19G					X	
6	031-106	Chute Deflector for 11J, 11H						X
7	999-596	Tension Nut 1/4 NC				X	X	X
8	980-181	Flat Washer 1/4				X	X	X
9	982-181	Lock Washer 1/4 Split	X	X	X			
10	985-181	Lock Washer 1/4 Ext. Star				X	X	X
11	960-181	Hex Nut 1/4 NC	X	X	X			
12	021-940	Eye Nut 1/4 NC				X	X	
13	976-181	Wing Nut 1/4 NC						X
14	901-186	HCS 1/4 NC x 3/4	X	X	X	X	X	
15	901-188	HCS 1/4 NC x 1						X

*Items 1 & 2 now have slotted mountings.

SENSATION

MODELS 3XGB-5

GYRO BLADE KIT

BLADE ARRANGEMENT

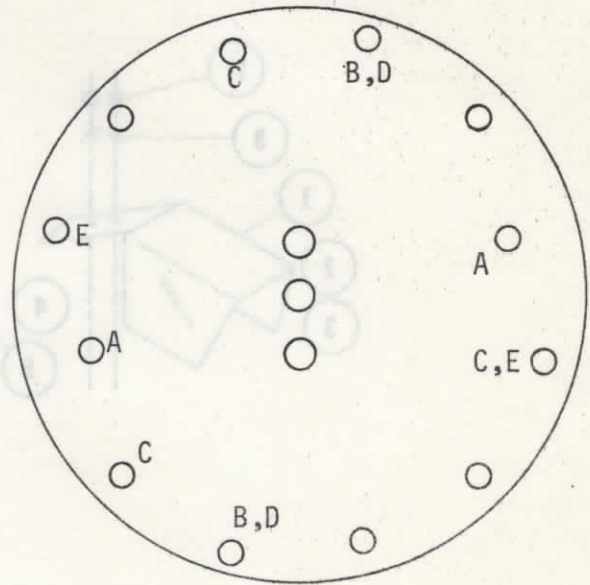
DECK
SIZE

BLADE
COMBINATION

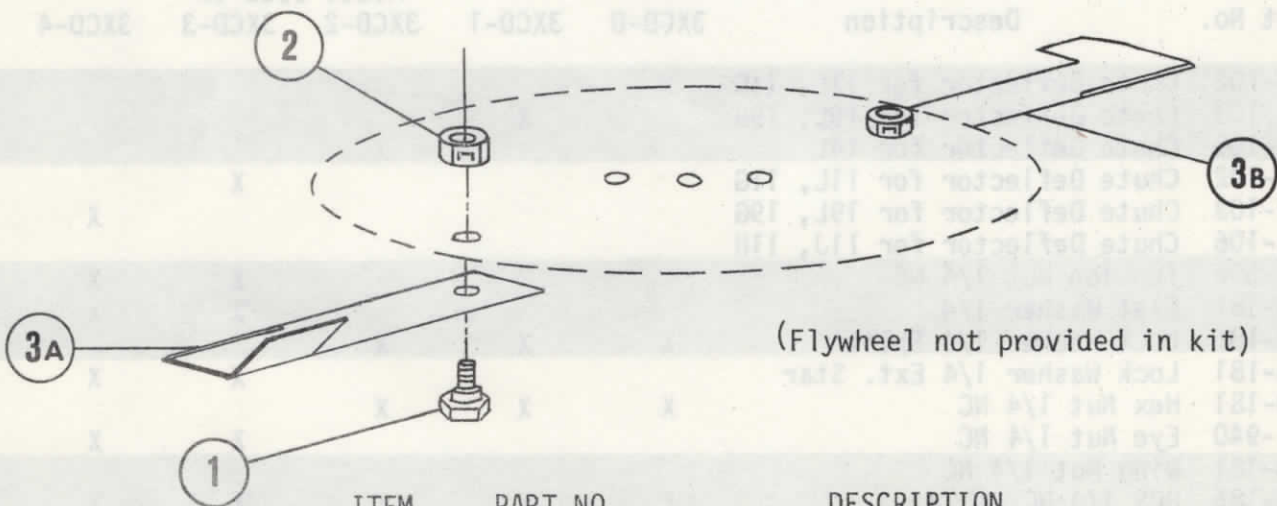
HOLES
USED

19" Two Airlift Blades
21" Two Airlift Blades
21" Three Airlift Blades
21" Four Blade: 2 Airlift
2 Flat

A
B
C
D
E



PARTS LIST



(Flywheel not provided in kit)

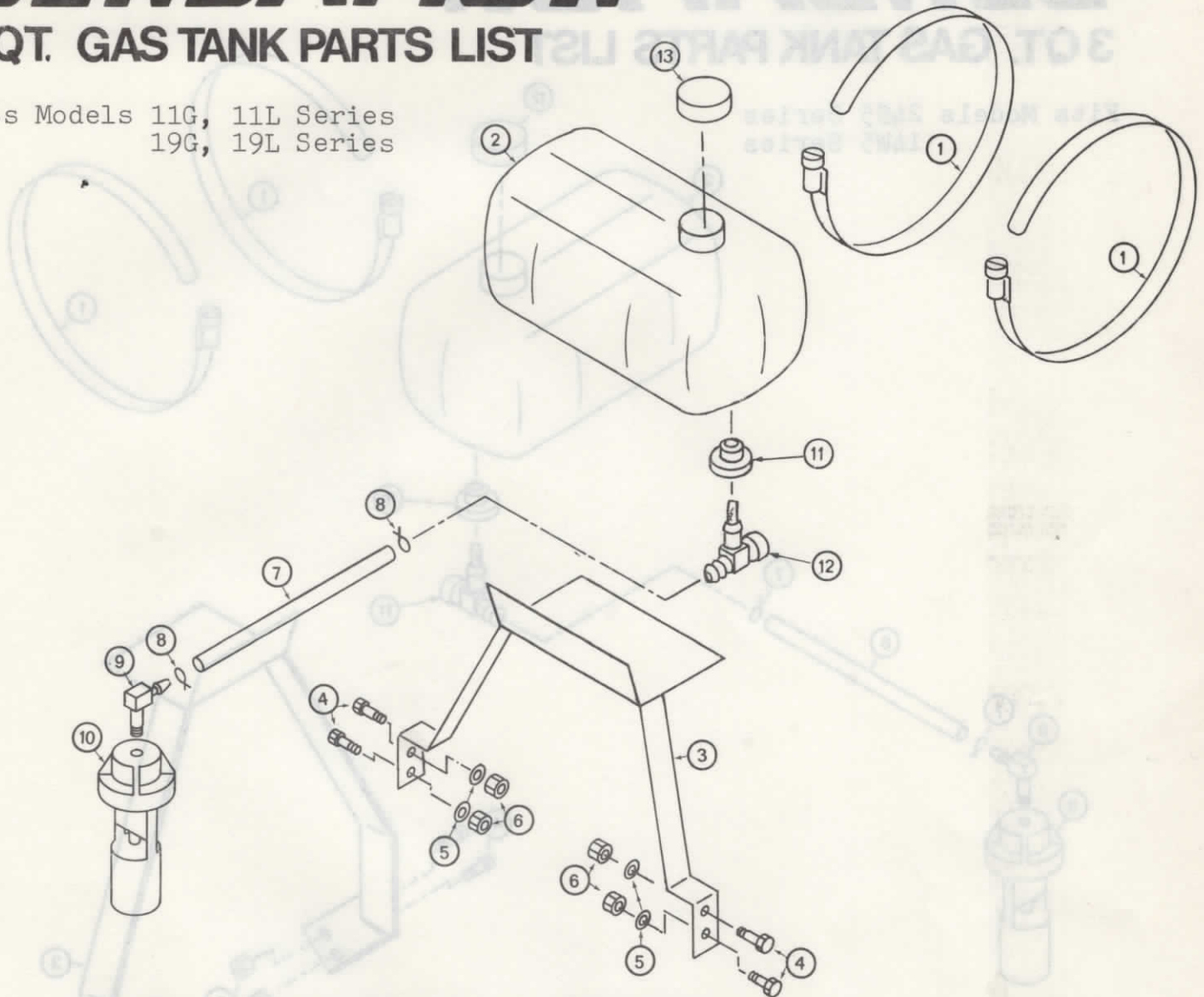
ITEM	PART NO.	DESCRIPTION
1	999-459	Shoulder Bolt, 5/16 NF X 1/2
2	969-200	Nut, 5/16 NF Hex, 2 Way Lock
3A	123-110	Gyro Blade, Airlift
3B	123-111	Gyro Blade, Flat

SENSATION

MODEL 3XGT-0

3 QT. GAS TANK PARTS LIST

Fits Models 11G, 11L Series
19G, 19L Series



ITEM NO.	PART NO.	DESCRIPTION
1	999-584	Hose Clamp 5 1/2" Worm Drive
2	323-308	3 Qt. Tank Includes #11, 12, & 13
3	021-301	Gas Tank Bracket
4	901-231	Hex Cap Screw 3/8 NC x 1 1/2
5	982-224	Lock Washer 3/8 Split Type
6	960-224	Nut, 3/8 NC Hex
7	323-312	Hose 1/4 ID x 3/8 OD x 12
8	999-580	Hose Clamp 3/8 OD Spring Type
9	999-587	Hose Fitting "L" 1/8 NPT x 1/4 Hose
10	323-310	Fuel Control Valve
11	323-321	Rubber Bushing
12	999-595	Shut Off Valve
13	323-325	Gas Tank Cap

THE SENSATION CORPORATION • OMAHA, NEBRASKA 68110 USA

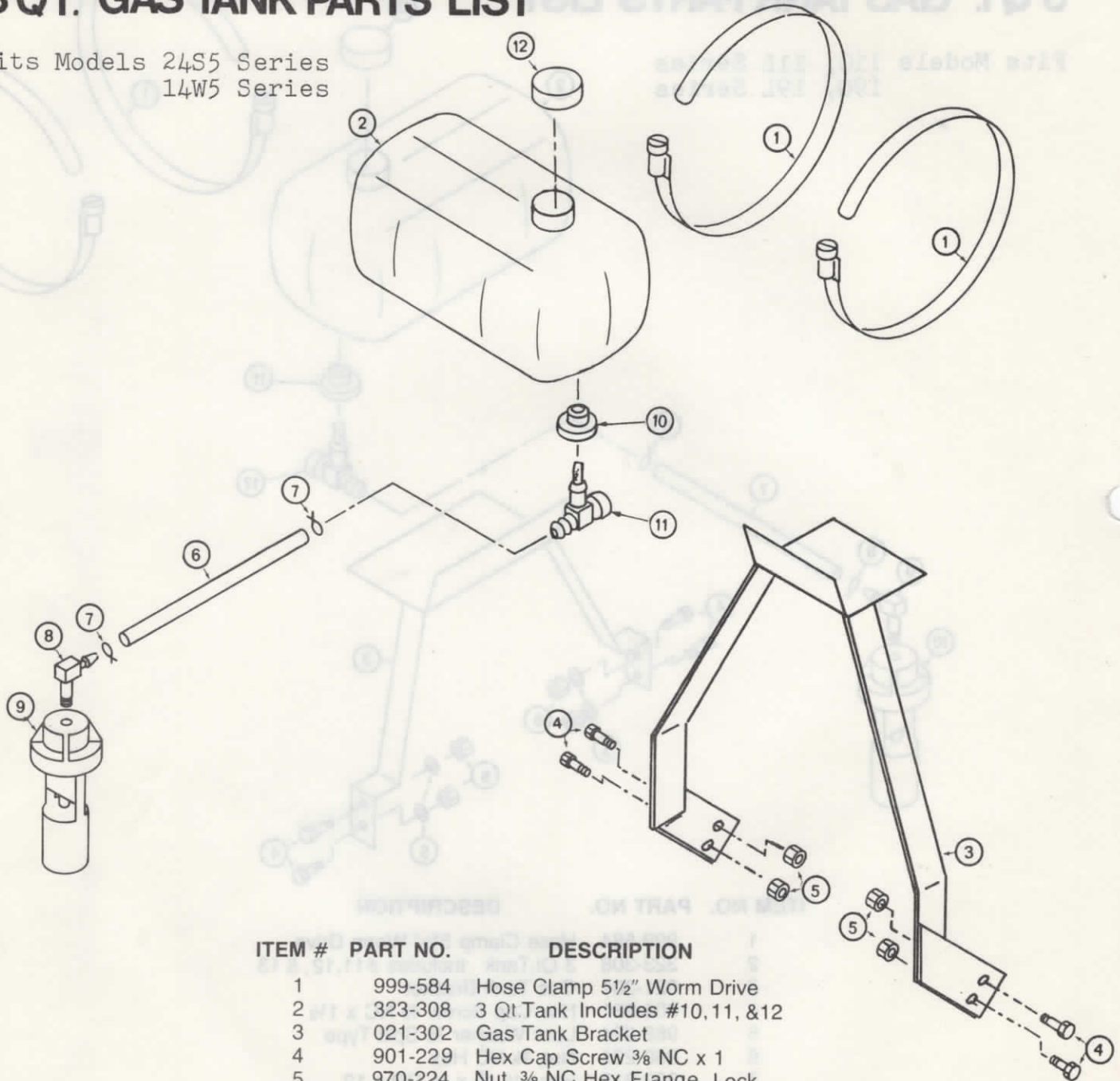
Form No. 113-328 11/79

SENSATION

MODEL 3XGT-1

3 QT. GAS TANK PARTS LIST

Fits Models 24S5 Series
14W5 Series



ITEM #	PART NO.	DESCRIPTION
1	999-584	Hose Clamp 5/2" Worm Drive
2	323-308	3 Qt. Tank Includes #10, 11, & 12
3	021-302	Gas Tank Bracket
4	901-229	Hex Cap Screw 3/8 NC x 1
5	970-224	Nut, 3/8 NC Hex Flange Lock
6	323-318	Hose 1/4 ID x 3/8 OD x 8
7	999-580	Hose Clamp 3/8 OD Spring Type
8	999-587	Hose Fitting "L" 1/8 NPT x 1/4 Hose
9	323-310	Fuel Control Valve
10	323-321	Rubber Bushing
11	999-595	Shut Off Valve
12	323-325	Gas Tank Cap

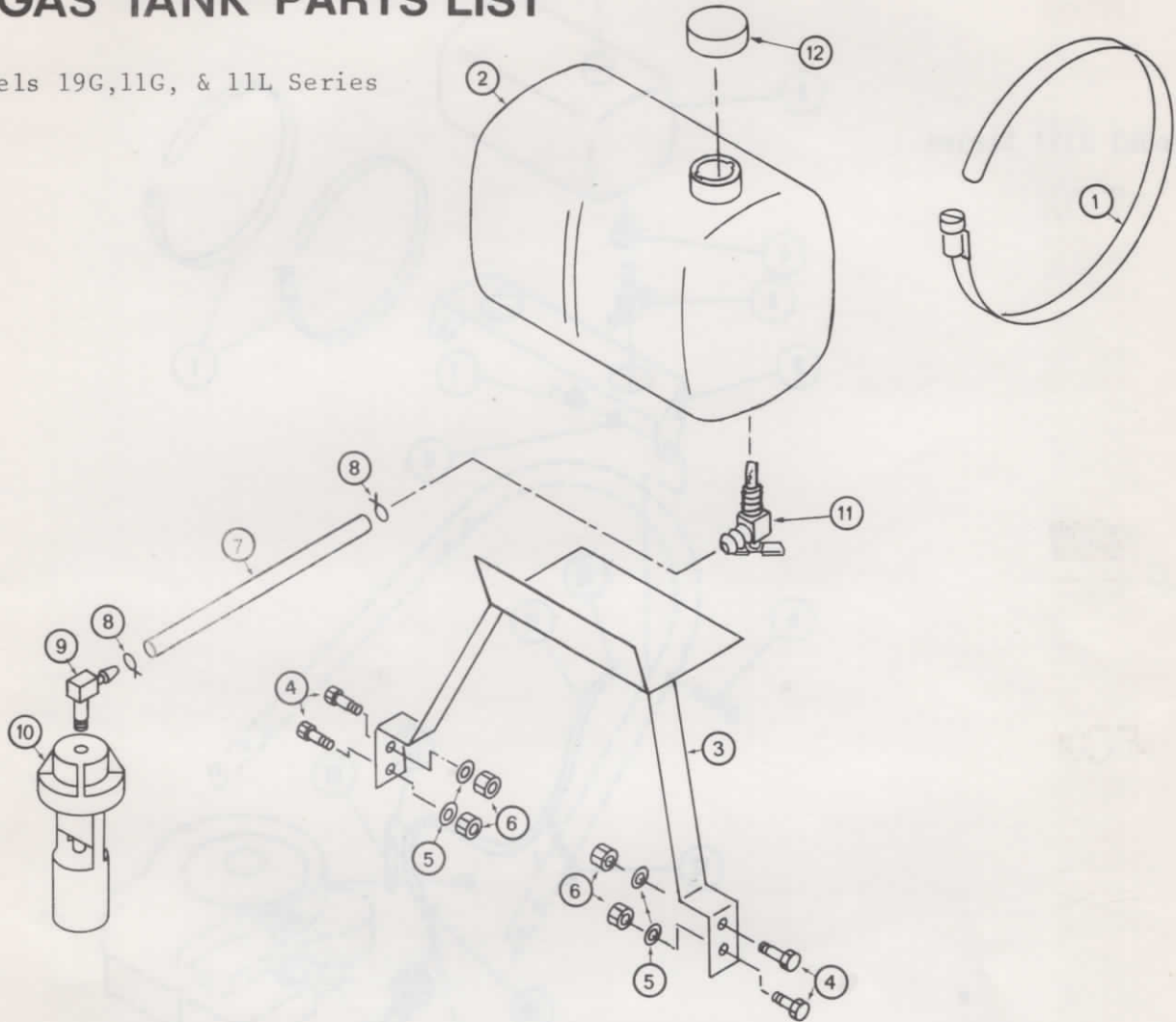
Form No. 113-340 11/79

SENSATION

MODEL 3XGT-2

5 QT. GAS TANK PARTS LIST

Fits Models 19G, 11G, & 11L Series



ITEM NO.	PART NO.	DESCRIPTION
1	999-602	Clamp Special
2	323-302	5 Qt. Tank Includes #11 & 12
3	021-301	Gas Tank Bracket
4	901-231	Hex Cap Screw $\frac{3}{8}$ NC x $1\frac{1}{2}$
5	982-224	Lock Washer $\frac{3}{8}$ Split Type
6	960-224	Nut, $\frac{3}{8}$ NC Hex
7	323-312	Hose $\frac{1}{4}$ ID x $\frac{3}{8}$ OD x 12
8	999-580	Hose Clamp $\frac{3}{8}$ OD Spring Type
9	999-587	Hose Fitting "L" $\frac{1}{8}$ NPT x $\frac{1}{4}$ Hose
10	323-310	Fuel Control Valve
11	999-603	Shut Off Valve
12	323-324	Gas Tank Cap

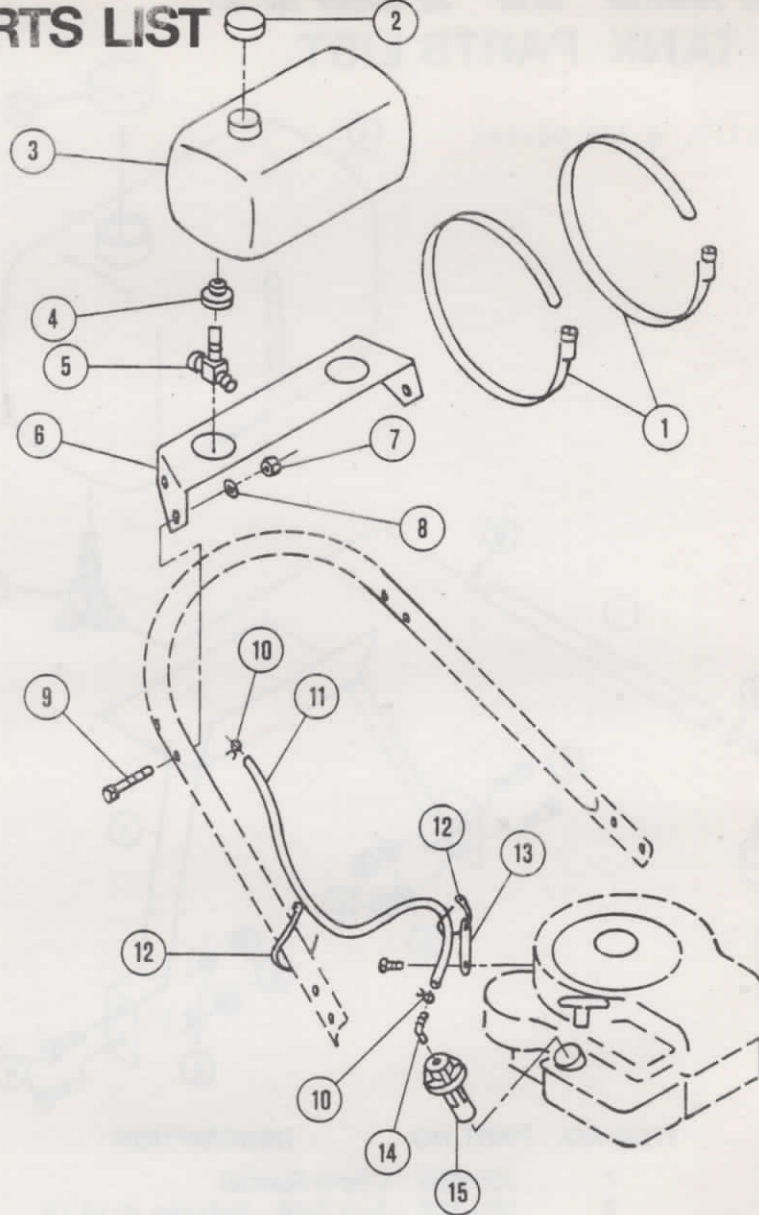
Form No. 113-343 3/80

SENSATION

MODEL 3XGT-3

3 QT GAS TANK PARTS LIST

Fits Model 21S4 Series



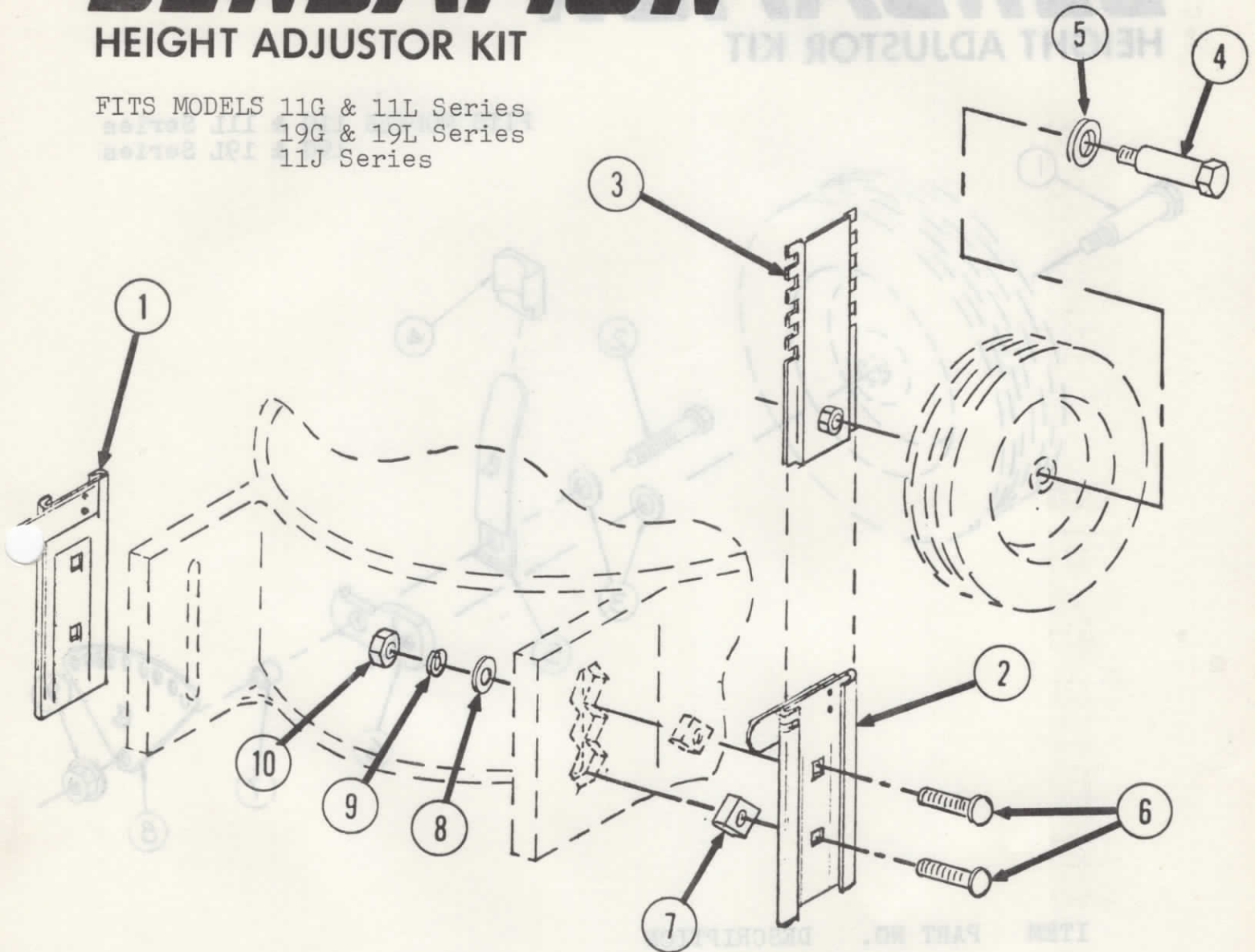
ITEM	PART NO.	DESCRIPTION	ITEM	PART NO.	DESCRIPTION
1	999-584	Hose Clamp 5-1/2"	9	901-211	Hex Cap Screw 5/16 NC x 1-3/4
2	323-325	Gas Tank Cap	10	999-610	Hose Clamp 1/2 OD Spring Type
3	323-308	3 Qt. Tank Includes #2,4,5	11	323-326	Hose 1/4" ID X 1/2 OD X 36"
4	323-321	Rubber Bushing	12	323-327	Plastic Tie
5	999-595	Shut-Off Valve	13	60287	Hanger Bracket
6	023-305	Gas Tank Bracket	14	999-587	Hose Fitting "L" 1/8 NPT
7	960-200	Nut 5/16" NC Hex	15	323-310	Fuel Control Valve
8	982-200	Lock Washer 5/16"			

SENSATION

MODEL 3XHA-0
(WJ6-A1)

HEIGHT ADJUSTOR KIT

FITS MODELS 11G & 11L Series
19G & 19L Series
11J Series



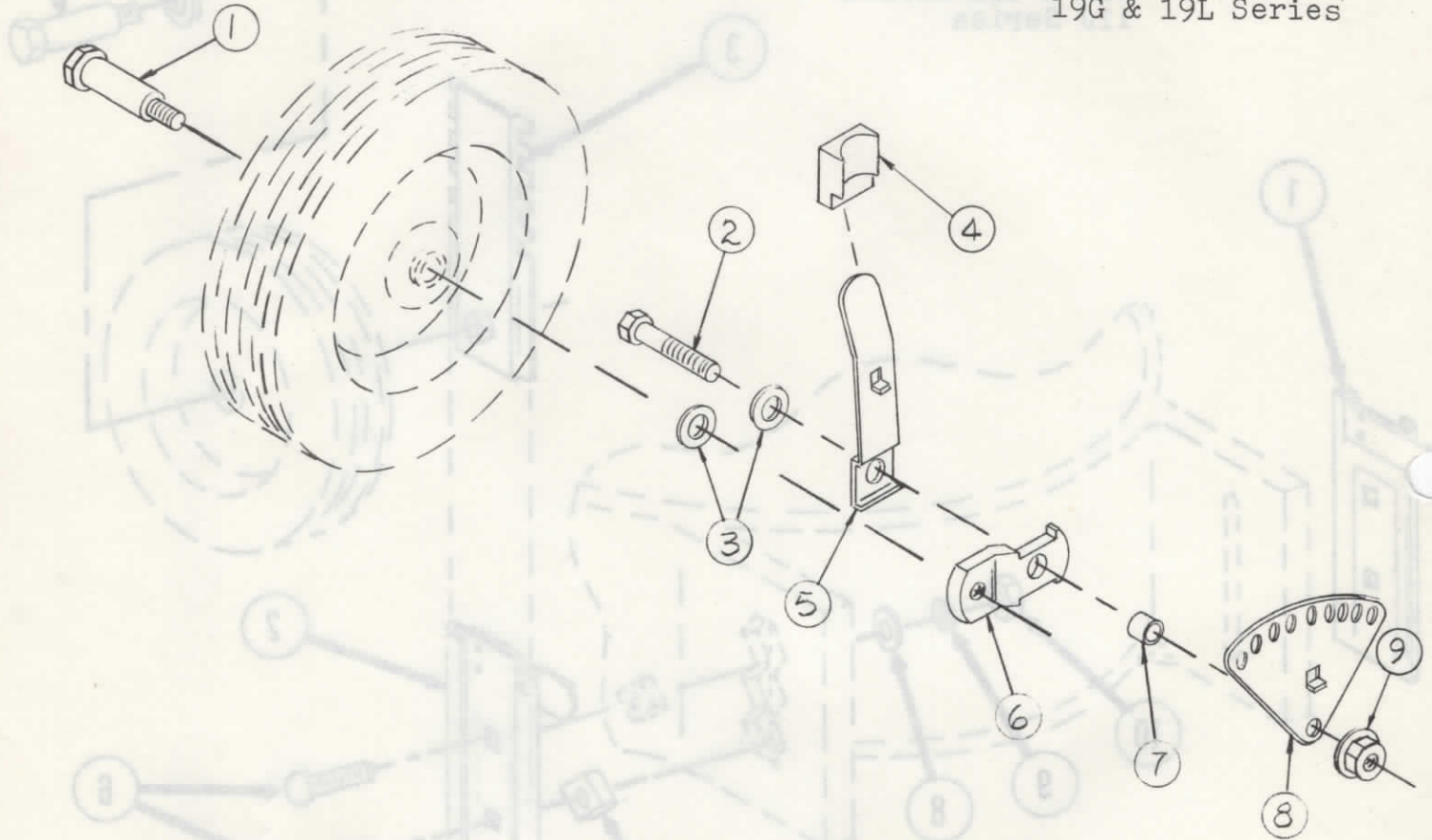
Ref No.	Part No.	Description
1	213-106	Mounting Channel R.H.
2	213-107	Mounting Channel L.H.
3	213-108	Wheel Adjust Slide
4	999-523	Shoulder Bolt 1/2 x 1-9/16 - 3/8 NC x 3/8
5	980-271	Washer, 1/2" Machine Bushing
6	911-232	Carriage Bolt - 3/8 NC x 1-3/4
7	974-271	Square Nut, 1/2 NC
8	980-224	Washer, 3/8 Flat
9	982-224	Lock Washer 3/8 Split Type
10	960-224	Nut, 3/8 NC Hex

SENSATION

MODEL 3XHA-1
(212-103)

HEIGHT ADJUSTOR KIT

FITS MODELS 11G & 11L Series
19G & 19L Series



ITEM	PART NO.	DESCRIPTION
1	999-456	Shoulder Bolt - 1/2 x 1-35/64 - 3/8 NC x 5/8
2	901-232	Hex Cap Screw - 3/8 NC x 1 3/4
3	980-224	Washer, 3/8 Flat
4	323-101	Handle Plastic Tip
5	213-111	Height Adjustor Handle
6	213-110	Wheel Arm
7	273-105	Height Adjustor Mounting Spacer
8	213-109	Height Adjustor Bracket
9	970-224	Nut, 3/8 NC Flange Lock

Form No. 113-308

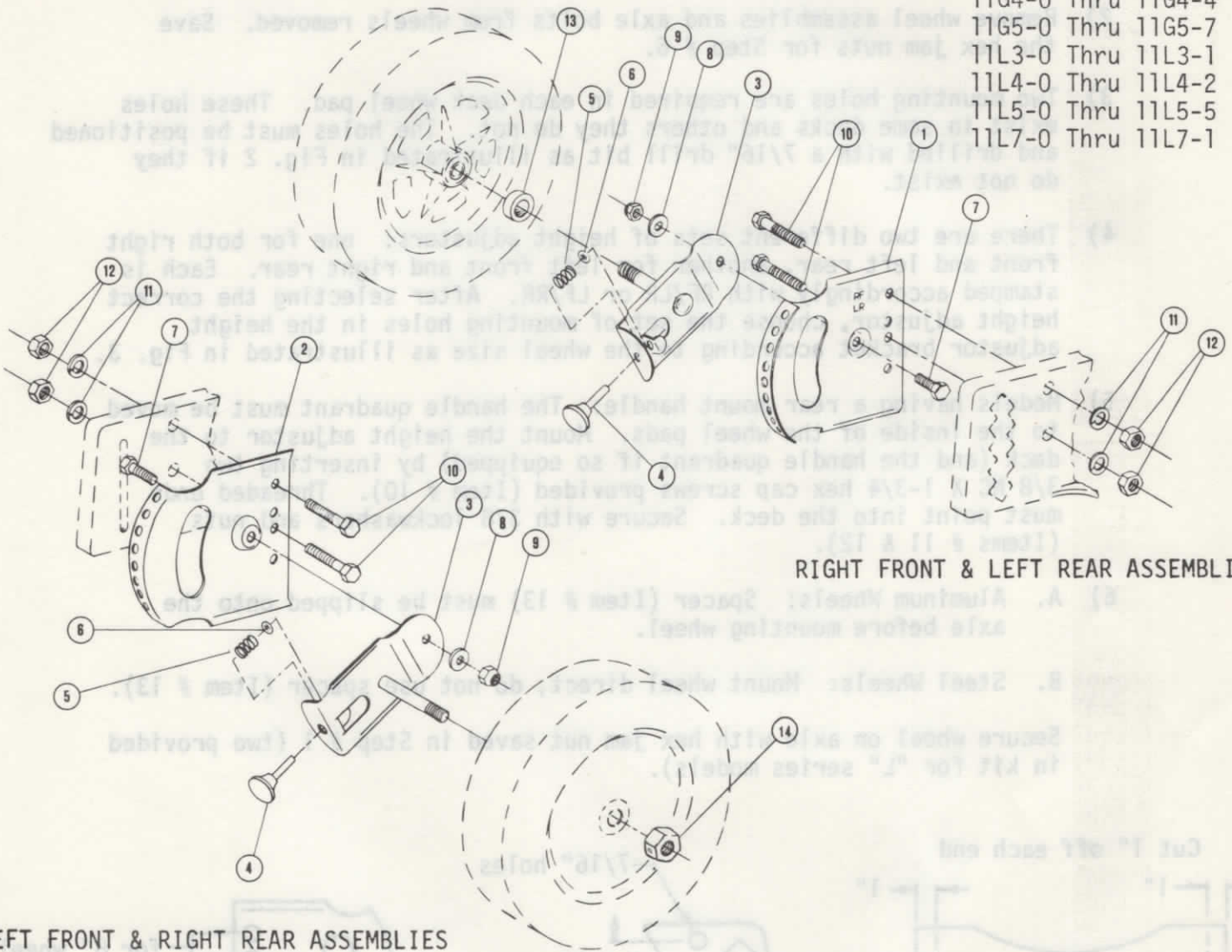
MODEL 3XHA-2

SENSATION

HEAVY DUTY HEIGHT ADJUSTORS

FITS MODELS:

- 19G3-0 Thru 19G3-4
- 19G4-0 Thru 19G4-3
- 19L4-0 Thru 19L4-1
- 11G3-0 Thru 11G3-3
- 11G4-0 Thru 11G4-4
- 11G5-0 Thru 11G5-7
- 11L3-0 Thru 11L3-1
- 11L4-0 Thru 11L4-2
- 11L5-0 Thru 11L5-5
- 11L7-0 Thru 11L7-1



RIGHT FRONT & LEFT REAR ASSEMBLIES

LEFT FRONT & RIGHT REAR ASSEMBLIES

ITEM NO.	PART NO.	DESCRIPTION	ITEM NO.	PART NO.	DESCRIPTION
1	213-208	Adj. Brkt. (R.F. & L.R.)	8	980-181	Washer, 1/4 Flat
2	213-207	Adj. Brkt. (L.F. & R.R.)	9	999-597	Crownlock Nut, 5/16 NF
3	211-203	Pivot Arm W/A	10	901-231	HCS, 3/8 NC X 1-1/2
4	999-599	Adjustment Pin	11	982-224	Lock Washer, 3/8 Split
5	203-208	Spring, 1/2 Long	12	960-224	Nut, 3/8 NC Hex
6	989-302	Push-On Retainer, 1/4	13	273-212	Spacer, 1/2 ID X 3/8
7	999-601	HCS, 5/16 NF X 5/8 Special	14	962-271	Jam Nut 1/2 NC

Assembly

- 1) Dragshields on 1979 and earlier 21" models must be modified as per Fig. 1, or replaced with new dragshield(s) P/N 032-111 (front) and P/N 032-112 (rear), purchased separately.

! CAUTION: DO NOT OPERATE MOWER WITHOUT DRAGSHIELD ASSEMBLY(S) IN PLACE.

- 2) Remove wheel assemblies and axle bolts from wheels removed. Save the hex jam nuts for Step # 6.
 - 3) Two mounting holes are required in each deck wheel pad. These holes exist in some decks and others they do not. The holes must be positioned and drilled with a 7/16" drill bit as illustrated in Fig. 2 if they do not exist.
 - 4) There are two different sets of height adjustors: one for both right front and left rear, another for left front and right rear. Each is stamped accordingly with RF/LR or LF/RR. After selecting the correct height adjustor, choose the set of mounting holes in the height adjustor bracket according to the wheel size as illustrated in Fig. 3.
 - 5) Models having a rear mount handle: The handle quadrant must be moved to the inside of the wheel pads. Mount the height adjustor to the deck (and the handle quadrant if so equipped) by inserting two 3/8 NC X 1-3/4 hex cap screws provided (Item # 10). Threaded ends must point into the deck. Secure with 3/8 lockwashers and nuts (Items # 11 & 12).
 - 6) A. Aluminum Wheels: Spacer (Item # 13) must be slipped onto the axle before mounting wheel.
 B. Steel Wheels: Mount wheel direct, do not use spacer (Item # 13).
- Secure wheel on axle with hex jam nut saved in Step # 1 (two provided in kit for "L" series models).

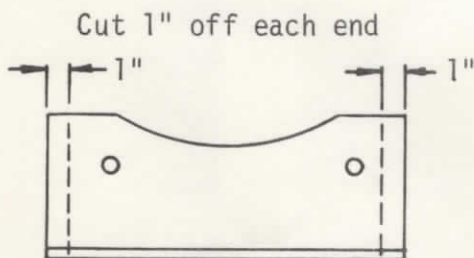


Fig. 1

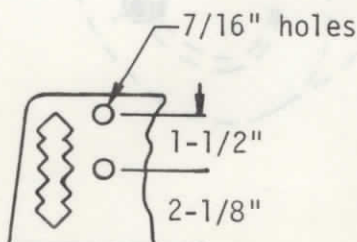


Fig. 2

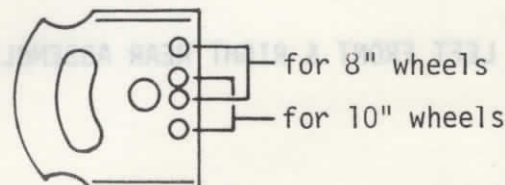


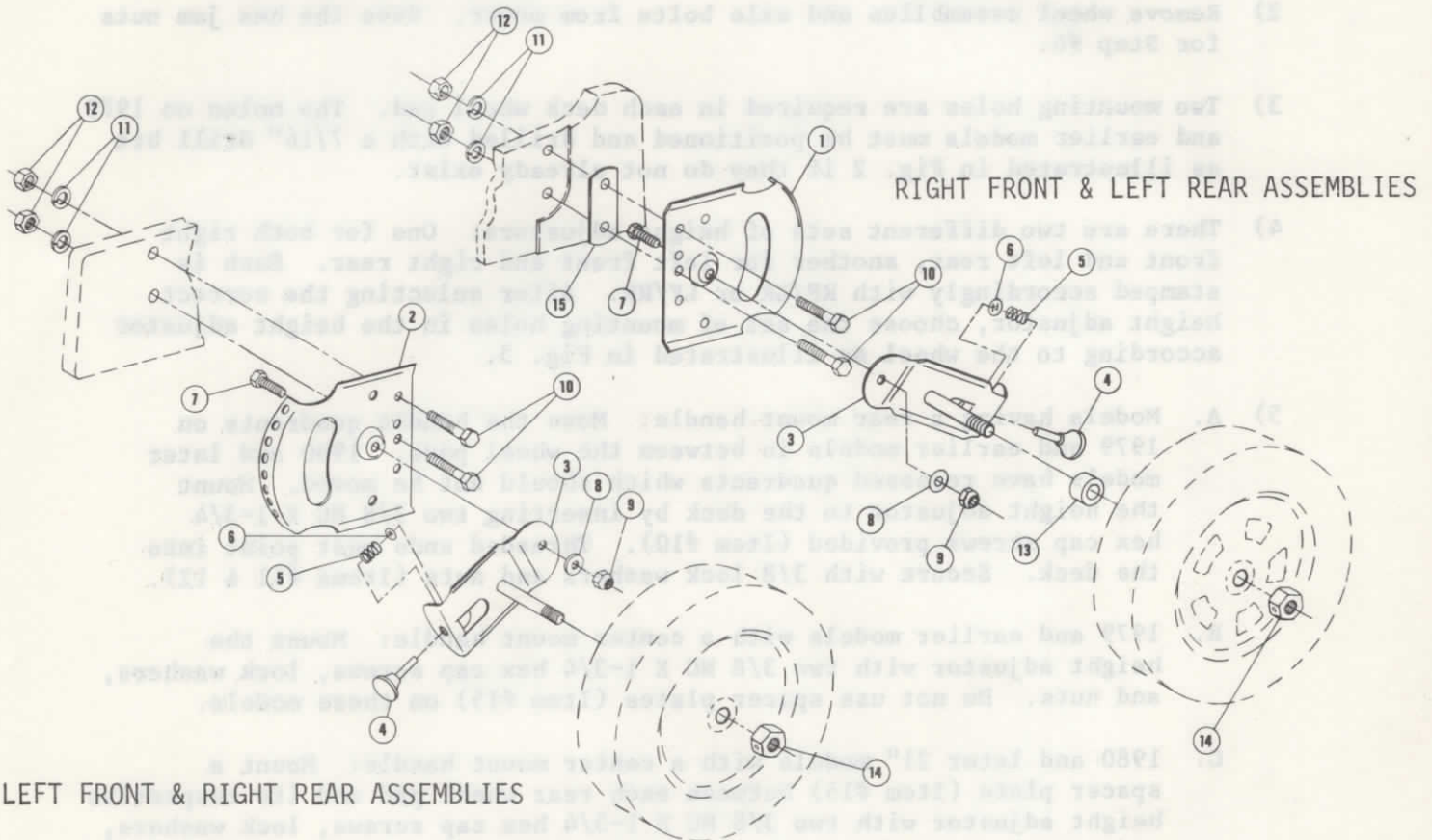
Fig. 3

Maintenance

Pivot arm (Item # 3) should move freely with minimum side movement. If adjustment is required, remove height adjustor from mower and tighten the bolt and crownlock nut (Items # 7 & 9).

SENSATION

HEAVY DUTY HEIGHT ADJUSTORS



RIGHT FRONT & LEFT REAR ASSEMBLIES

LEFT FRONT & RIGHT REAR ASSEMBLIES

REF NO.	PART NO.	DESCRIPTION	REF NO.	PART NO.	DESCRIPTION
1	213-208	Adj. Brkt. (R.F. & L.R.)	10	901-231	HCS 3/8 NC X 1-1/2
2	213-207	Adj. Brkt. (L.F. & R.R.)		*901-209	HCS 5/16 NC X 1-1/4
3	211-203	Pivot Arm W/A	11	982-224	Lock Washer 3/8 Split
4	999-599	Adjustment Pin		*982-200	Lock Washer 5/16 Split
5	203-208	Spring 1/2" Long	12	960-224	Nut 3/8 NC Hex
6	989-302	Push on Retainer, 1/4		*960-200	Nut 5/16 NC Hex
7	999-601	HCS 5/16 NF X 5/8 Special	13	273-212	Spacer 1/2 ID X 3/8
8	980-181	Washer 1/4 Flat	14	962-271	Jam Nut 1/2 NC
9	999-597	Crownlock Nut 5/16 NF	15	*213-115	Spacer Plate

- Note: 1) Item 13 used with Mag Wheels only.
 2) *Items used with 1980 and later models with center mount handles only.
 3) Pivot arm (Item # 3) should move freely with minimum side movement. If adjustment is required, remove height adjustor from mower and tighten the bolt and crownlock nut (Items # 7 & 9).

ASSEMBLY

- 1) Dragshields on 1979 and earlier 21" models must be modified as per Fig. 1, or replaced with new dragshield(s) P/N 032-111 (front) and P/N 032-112 (rear), purchased separately.

! CAUTION: DO NOT OPERATE MOWER WITHOUT DRAGSHIELD ASSEMBLY(S) IN PLACE.

- 2) Remove wheel assemblies and axle bolts from mower. Save the hex jam nuts for Step #6.
- 3) Two mounting holes are required in each deck wheel pad. The holes on 1979 and earlier models must be positioned and drilled with a 7/16" drill bit as illustrated in Fig. 2 if they do not already exist.
- 4) There are two different sets of height adjustors: One for both right front and left rear, another for left front and right rear. Each is stamped accordingly with RF/LR or LF/RR. After selecting the correct height adjustor, choose the set of mounting holes in the height adjustor according to the wheel as illustrated in Fig. 3.
- 5)
 - A. Models having a rear mount handle: Move the handle quadrants on 1979 and earlier models in between the wheel pads. 1980 and later models have recessed quadrants which should not be moved. Mount the height adjustor to the deck by inserting two 3/8 NC X 1-3/4 hex cap screws provided (Item #10). Threaded ends must point into the deck. Secure with 3/8 lock washers and nuts (Items #11 & 12).
 - B. 1979 and earlier models with a center mount handle: Mount the height adjustor with two 3/8 NC X 1-3/4 hex cap screws, lock washers, and nuts. Do not use spacer plates (Item #15) on these models.
 - C. 1980 and later 21" models with a center mount handle: Mount a spacer plate (Item #15) between each rear wheel pad and its respective height adjustor with two 3/8 NC X 1-3/4 hex cap screws, lock washers, and nuts. Mount the front ones without spacer plates, but use 5/16 NC X 1-1/4 hex cap screws, lock washers, and nuts.
- 6)
 - A. Aluminum Wheels: Spacer (Item #13) must be slipped onto the axle before mounting wheel.
 - B. Steel Wheels: Mount wheels direct, do not use spacer (Item #13).

Secure wheel on axle with hex jam nut saved in Step #1 (two provided in kit for "L" series models).

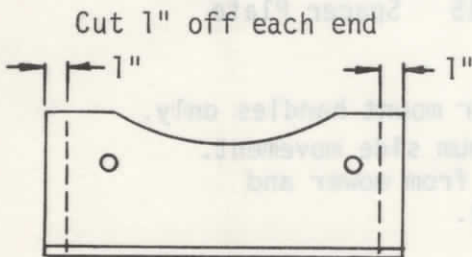


Fig. 1

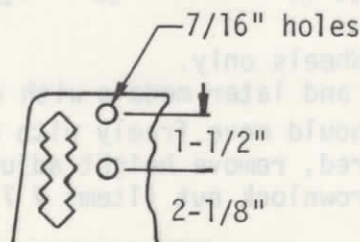


Fig. 2

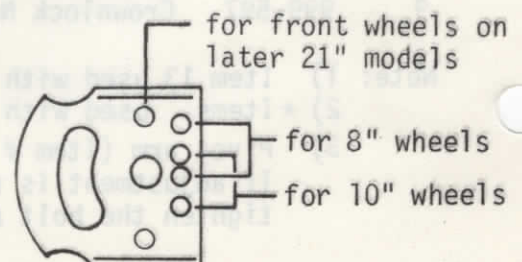


Fig. 3

SENSATION

MODELS: 3XJS-S
3XJS-M
3XJS-L
3XJS-XL
3XJS-XXL

ONE PIECE SENSATION SUIT

Bright, highway safety orange colored utility jumpsuit. Provides protection for personal clothing and gives a neat, snappy, professional teamwork look.

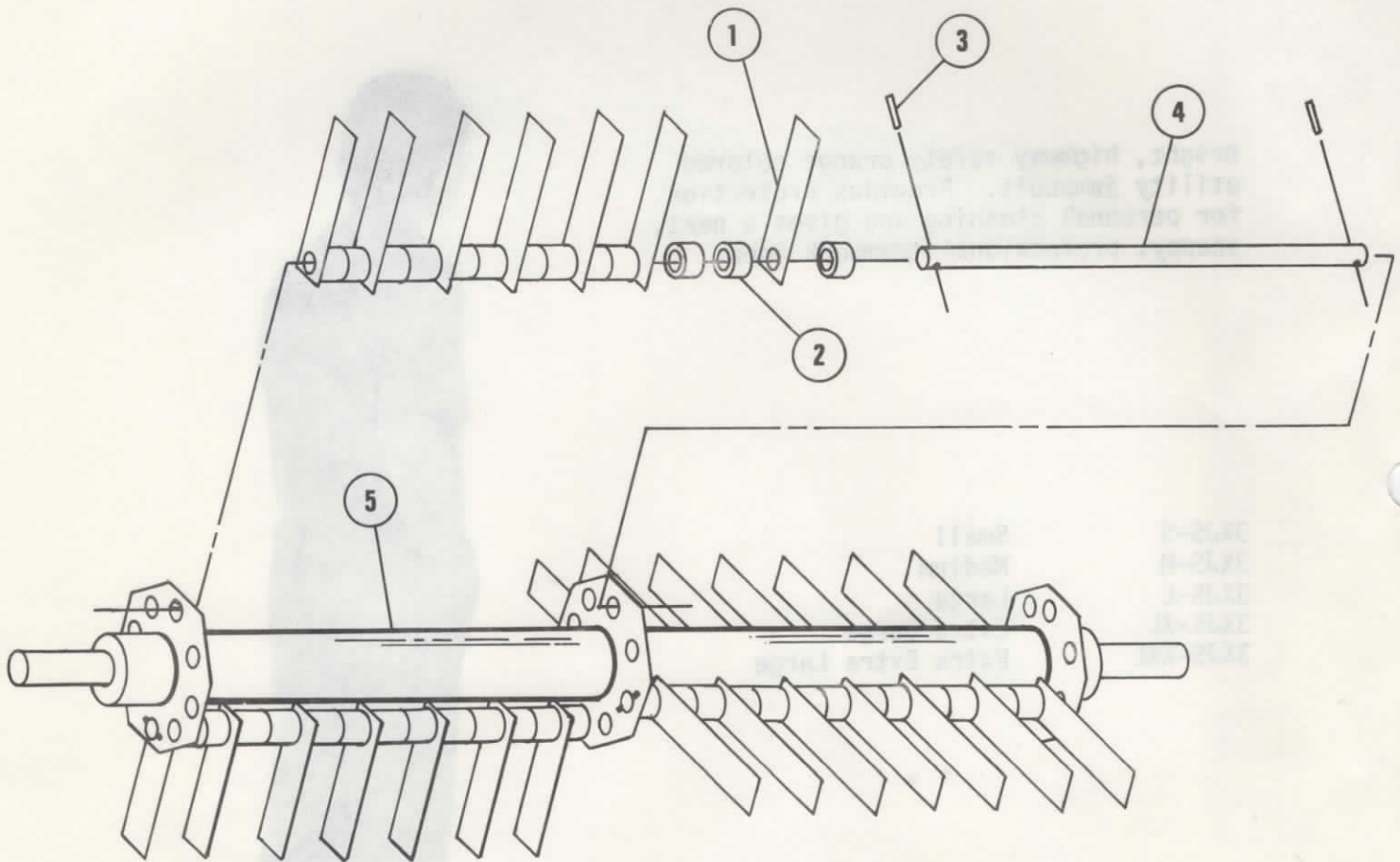


- | | |
|----------|-------------------|
| 3XJS-S | Small |
| 3XJS-M | Medium |
| 3XJS-L | Large |
| 3XJS-XL | Extra Large |
| 3XJS-XXL | Extra Extra Large |

SENSATION

MODEL 3XRS-0

RAKER SHAFT PARTS LIST



Ref. No.	Part No.	Description
1	FNGR	Finger Blade
*2	SPCRS	Spacers, Nylon
3	ROLPIN	Roll Pin 1/8 X 7/8
4	SAT-8-SH	Satellite Shaft 10"
5	SH-F	Main Shaft, Raker

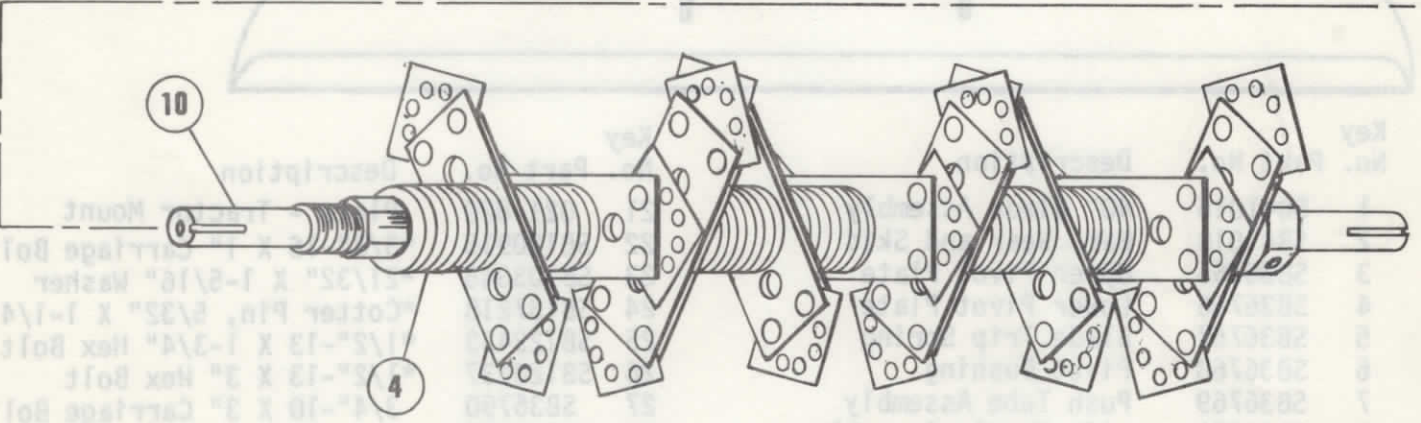
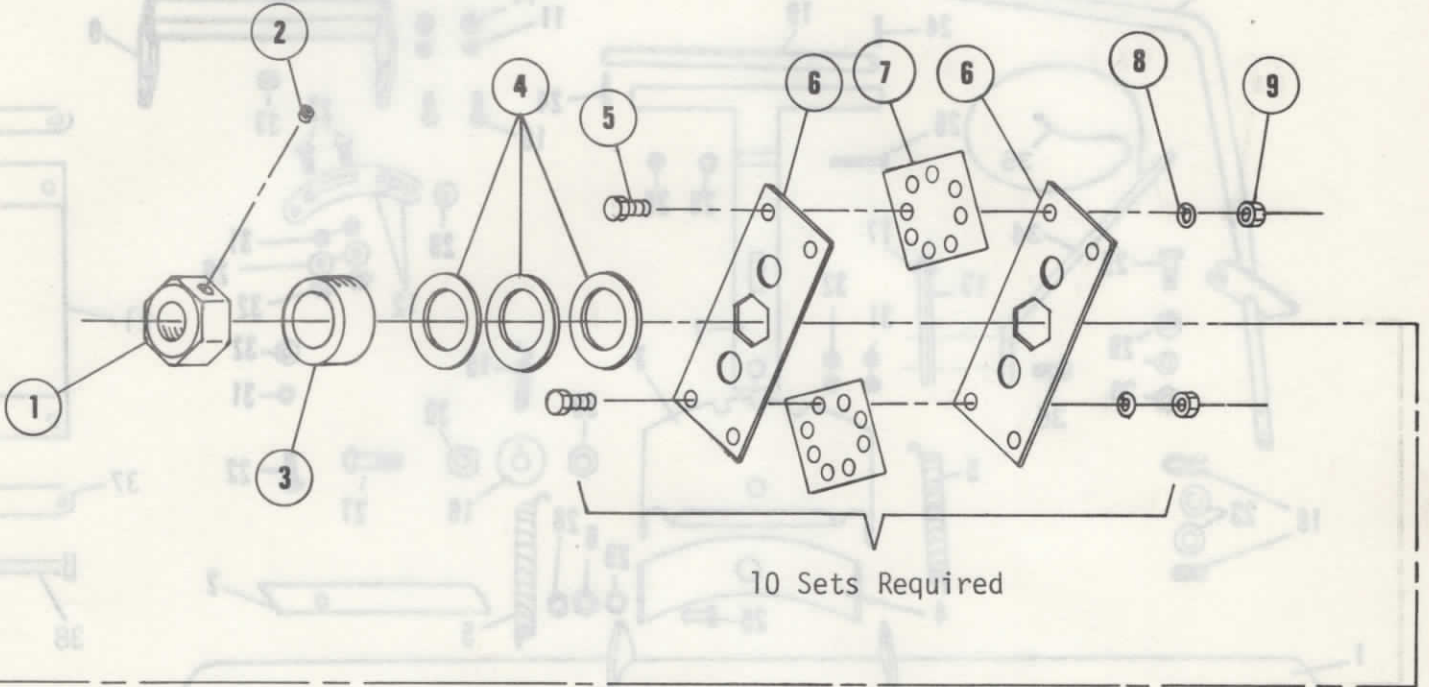
*Note: Arrange Spacers As Illustrated.

MODEL 3X2B-0

SENSATION

MODEL 3XSA-0

AERATOR-SLICER SHAFT



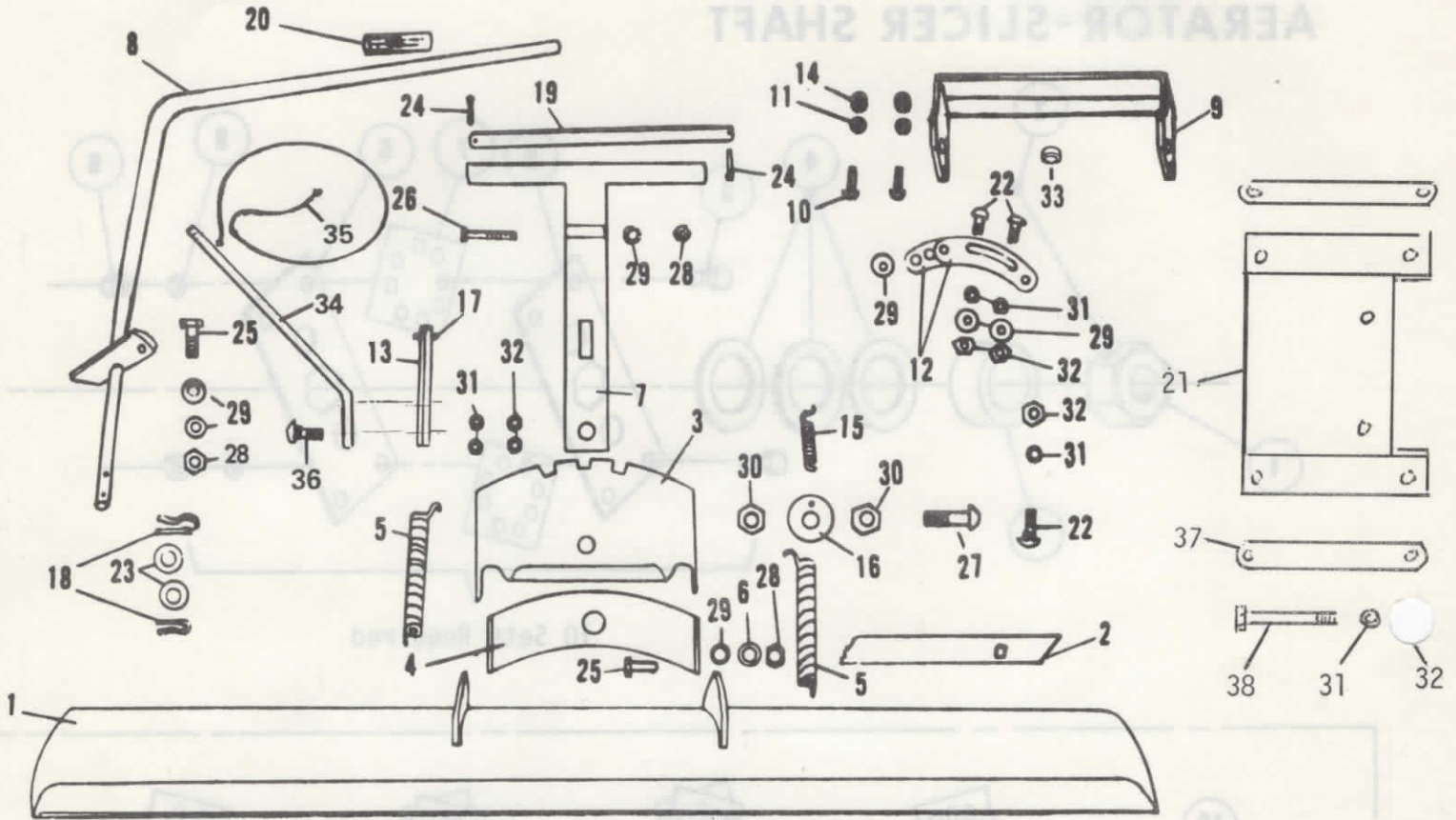
Ref. No.	Part No.	Description	Ref. No.	Part No.	Description
1	JAMNT	Nut 1" Jam w/Set Screw	6	HDPLT	Holder Plate
2		Set Screw 5/16 NC x 5/16	7	SQSBLD	Slicer Blade
3	SLV	Sleeve Spacer	8	LKWAS	Lock Washer 1/4
*4	SFwas	Washer 1-7/8 OD	9	NTBLT	Nut 1/4 NC Hex
5	BBLT	Bolt 1/4 NC X 3/4	10	SH	Main Shaft-Slicer

* Note: Use three washers on each end, and thirteen between blades.

SENSATION

40" SNOW BLADE

MODEL 3XSB-O



Key No.	Part No.	Description
1	SB41016	40" Blade Assembly
2	SB41018	Bar, Wear and Skid
3	SB36765	Upper Pivot Plate
4	SB36766	Lower Pivot Plate
5	SB36767	Blade Trip Spring
6	SB36768	Pivot Bushing
7	SB36769	Push Tube Assembly
8	SB43472	Lift Handle Assembly
9	SB43477	Mount Bracket Assembly
10	SB121900	1/4"-20 X 1" Hex Hd. Bolt (Special)
11	SB120380	*1/4" Split Lock Washer
12	SB36780	Link Lift
13	SB36781	Pivot Block
14	SB997314	*1/4"-20" Hex Lock Nut
15	SB36783	Blade Angling Spring
16	SB36784	Latch Spring Washer
17	SB456299	Spirol Pin
18	SB36192	Hair Pin Cotter
19	SB36787	Pivot Rod
20	SB36788	Handle Grip

Key No.	Part No.	Description
21	021-820	Plate - Tractor Mount
22	SB120915	*3/8"-16 X 1" Carriage Bolt
23	SB103345	*21/32" X 1-5/16" Washer
24	SB137218	*Cotter Pin, 5/32" X 1-1/4"
25	SB122433	*1/2"-13 X 1-3/4" Hex Bolt
26	SB120237	*1/2"-13 X 3" Hex Bolt
27	SB36790	3/4"-10 X 3" Carriage Bolt
28	SB120378	*1/2"-13 Hex Nut
29	SB120396	*Plain Washer 17/32" X 1-1/16"
30	SB426897	3/4"-10 Hex Jam Nut
31	SB120382	*3/8" Lock Washer
32	SB120377	*3/8"-16 Hex Nut
33	SB41231	5/16" Spacer (1/2" ID - 5/8" OD)
34	SB43475	Pivot Block Extension
35	SB36785	*Pull Rope
36	SB126411	*3/8"-16 X 1-1/4" Carriage Bolt
37	023-837	Mounting Strap
38	981-237	Hex Cap Screw 3/8 NC X 3

COMMERCIAL

SENSATION

MODEL 3XSB-O

40" SNOW BLADE

IMPORTANT

Read and Save this Manual. It contains instructions for assembly, adjustment, maintenance, and lubrication of the unit. It also contains a complete parts list and diagram.

This unit is a high quality machine which will give good service if not abused. The manual has been prepared to assist you in obtaining the best results. Refer to it for aid in problems pertaining to operation and maintenance. For repairs other than adjustments mentioned in this manual, we suggest you take the machine to a competent repairman.

It is imperative in operating the machine that certain normal precautions be observed in order to prevent injury or damage.

UNIT PARTS SERVICE AND WARRANTY

A nation-wide Parts and Service Organization has been established to provide locally available parts and service on our products.

If you need parts or service on this machine contact the dealer from which you purchased your unit.

When ordering repair parts always give the following information: 1. The Part Name; 2. The Part Number; 3. The Quantity desired; 4. The Full Model Number which can be found on a plate attached to the unit.

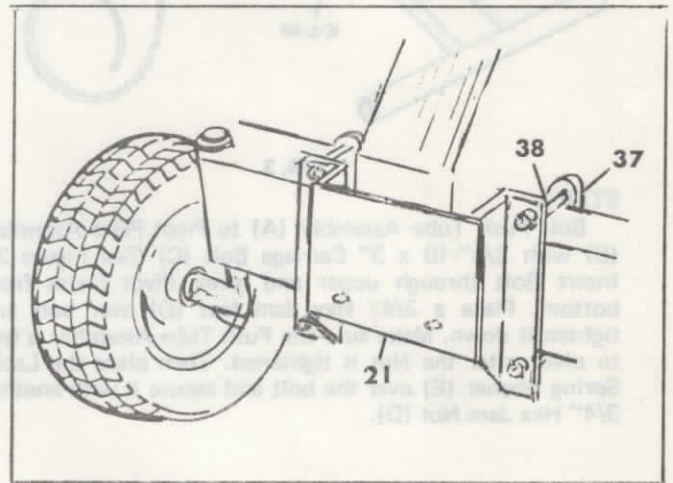
The factory warranty policy will be honored at any of our Authorized Parts and Service Dealers in the field. Be sure to fill in and mail the warranty registration card packed with the unit.

THE SENSATION CORPORATION • OMAHA, NEBRASKA 68110 USA

The Professional 40" snow blade is designed to fit the Sensation riders models 86S5, 80S8, and 80E8. The unit is shipped completely disassembled. By following the step by step instructions, considerable time and effort will be saved in assembly and mounting to the riding mower.

Rider Preparation

1. Position the mounting bracket (Item # 21 on the parts list) onto the front frame of the rider. Be sure that the bracket is mounted with angle cut off edge facing downward.
2. Attach securely using mounting straps (Item # 37), bolts, lock washers, and nuts provided.



ASSEMBLY INSTRUCTIONS

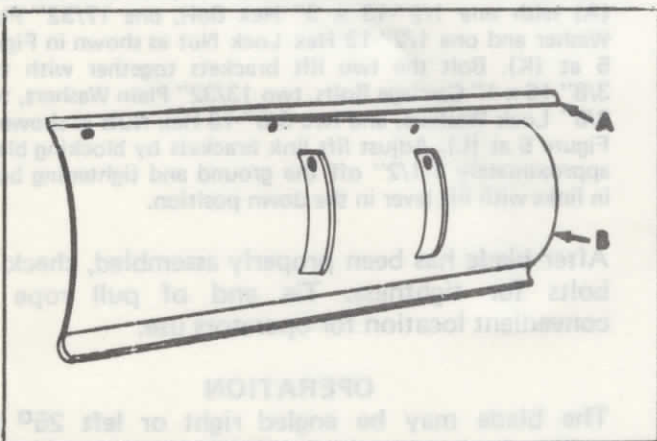


FIG. 1

STEP 1

Bolt adjustable Wear Bar (A) to Blade (B) with four 3/8"-16 x 1" Carriage Bolts, four 3/8" Lock Washers and four 3/8" Reg. Hex Nuts.

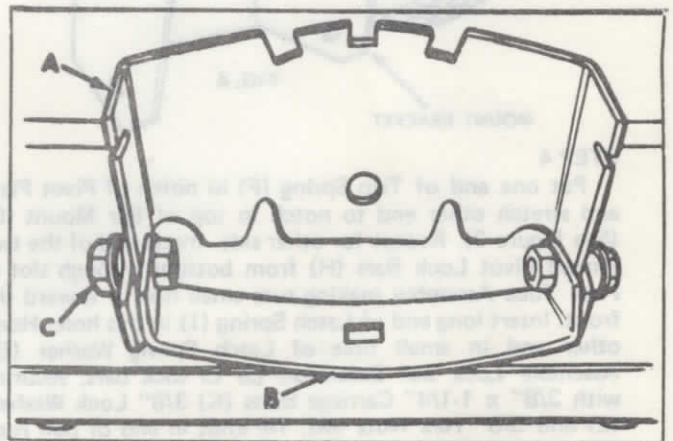


FIG. 2

STEP 2

Attach Upper Pivot Plate (A) and Lower Pivot Plate (B) to Blade using two 1/2"-13 x 1-3/4" Hex Bolts (C), two 3/4" x 7/16" Pivot Bushings, two 17/32" Flat Washers and two 1/2" Hex Lock Nuts (See Figure 2).

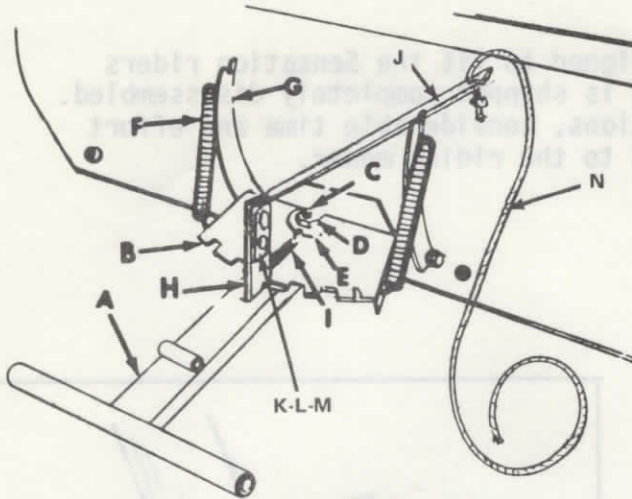


FIG. 3

STEP 3

Bolt Push Tube Assembly (A) to Pivot Plate Assembly (B) with 3/4"-10 x 3" Carriage Bolt (C) (See Figure 3). Insert Bolt through upper and lower Pivot Plates from bottom. Place a 3/4" Hex Jam Nut (D) over bolt and tighten it down. Make sure the Push Tube Assembly is free to pivot after the Nut is tightened. Then place the Latch Spring Washer (E) over the bolt and secure it with another 3/4" Hex Jam Nut (D).

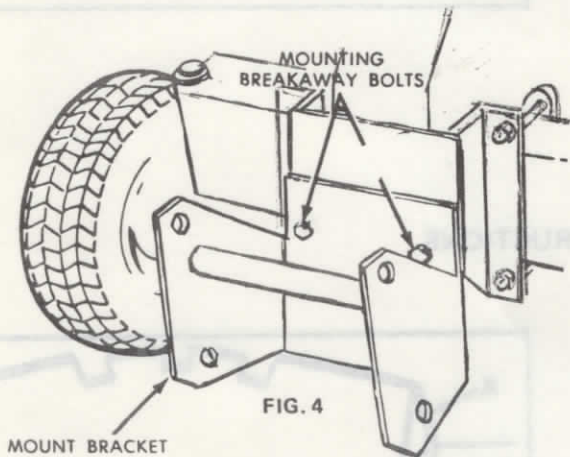


FIG. 4

STEP 4

Put one end of Trip Spring (F) in notch of Pivot Plate and stretch other end to notch in top of Bar Mount (G) (See Figure 3). Repeat for other side. Insert end of the two Pinned Pivot Lock Bars (H) from bottom through slot in Push Tube Assembly making sure small hole is toward the front. Insert long end of Latch Spring (I) in this hole. Hook other end in small hole of Latch Spring Washer (E). Assemble Lock Bar Extension (J) to lock bars, securing with 3/8" x 1-1/4" Carriage Bolts (K) 3/8" Lock Washers (L) and 3/8" Hex Nuts (M). Tie knot in end of pull rope (N) and thread thru hole in Lock Bar Extension.

STEP 5

Install Mount Bracket to tractor mount plate with two 1/4"-20 x 1" Hex Head (Breakaway) Bolts, two 1/4" Split Lock Washers, and two 1/4"-20 Hex Nuts (See Figure 4). Choose set of mounting holes which will center blade on tractor (Refer to tractor preparation section).

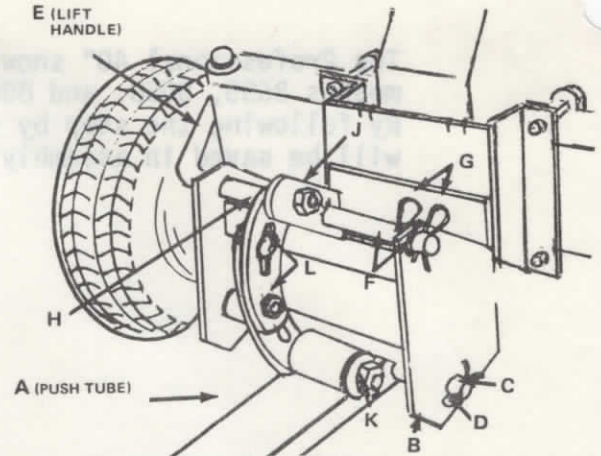


FIG. 5

CAUTION: Do not replace the two mount bracket mounting bolts with a harder bolt than the original equipment bolts. These bolts are intended to break away if blade hits a solid, unyielding object to protect the tractor frame.

STEP 6

Insert Push Tube (A) between lower holes in Mount Bracket (B). Push Pivot Rod (C) through mount bracket holes and push tube. Secure with two 5/32" x 1-1/4" Cotter Pins (D) as shown in Figure 5.

STEP 7

Install Lift Handle (E) through mounting bracket and secure with two 21/32" Washers (F) and two Hair Pin Cotters (G) as shown in Figure 5.

STEP 8

Install one Link Lift Bracket (H) with divet on bottom to the Lift Assembly (E) with one 1/2"-13 x 1-3/4" Hex Bolt, three 17/32" Washers between lift bracket and lift assembly and one 1/2"-13 Hex Lock Nut as shown in Figure 5 at (J). Install other lift bracket (H) to push tube assembly (A) with one 1/2"-13 x 3" Hex Bolt, one 17/32" Plain Washer and one 1/2"-13 Hex Lock Nut as shown in Figure 5 at (K). Bolt the two lift brackets together with two 3/8"-16 x 1" Carriage Bolts, two 13/32" Plain Washers, two 3/8" Lock Washers, and two 3/8"-16 Hex Nuts as shown in Figure 5 at (L). Adjust lift link brackets by blocking blade approximately 1-1/2" off the ground and tightening bolts in links with lift lever in the down position.

After blade has been properly assembled, check all bolts for tightness. Tie end of pull rope at convenient location for operators use.

OPERATION

The blade may be angled right or left 25° by pulling back on rope and pushing corner of blade against an obstacle (such as snow bank). Release rope and blade angle will lock automatically in place. Keep all Pivot Points on snow blade lightly oiled. Tractor mount bracket may be left on tractor upon removal of snow blade. Disconnect at the two 1/4" breakaway bolts.

SENSATION

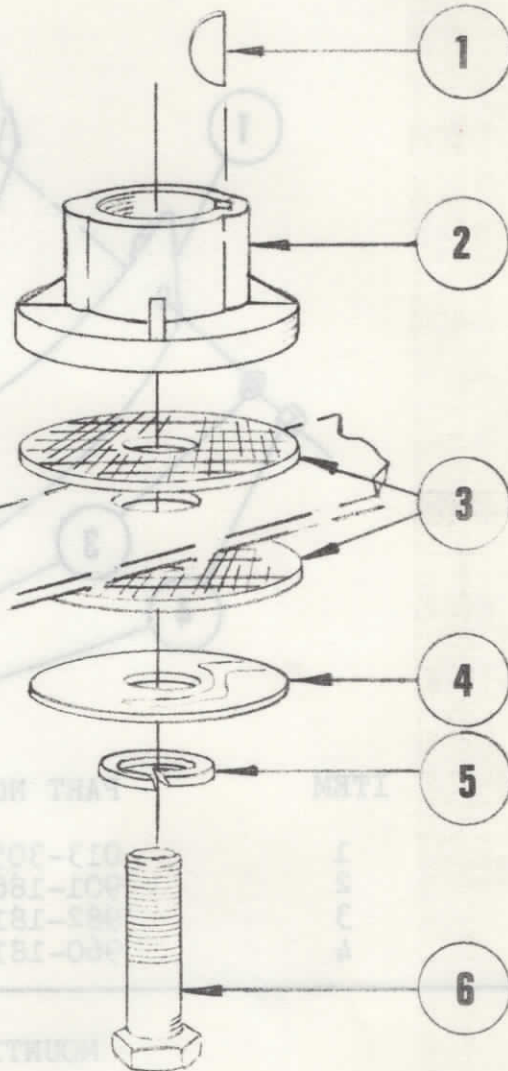
MODEL 3XSC-0
3XSC-1
3XSC-2

BLADE SLIP CLUTCH

NOTE: Blade not included in kit.
Use Sensation blade as listed.

Model No.	Blade P/N	Size	HP
3XSC-0	123-106	21"	3-1/2, 4
3XSC-1	123-106	21"	5
3XSC-2	123-105	19"	3-1/2, 4

Blade position
between fiber
washers



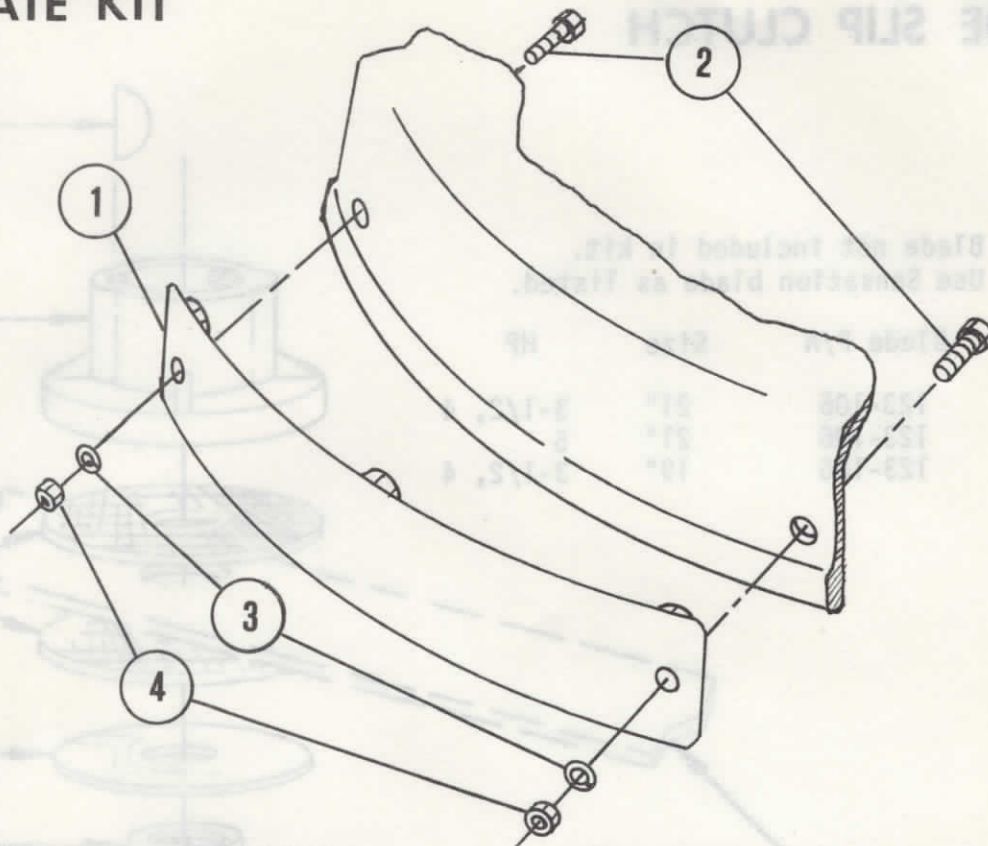
Item No.	Part No.	Description	MODEL USED ON		
			3XSC-0	3XSC-1	3XSC-2
1	996-142	Wood Ruff Key # 6	X		X
	995-185	Square Key, 1/4" X 5/8"		X	
2	183-301	Slip Clutch Body, 7/8" Bore X 5/8" Deep	X		
	183-302	Slip Clutch Body, 1" Bore X 5/8" Deep		X	
	183-303	Slip Clutch Body, 7/8" Bore X 3/4" Deep			X
3	183-304	Washer, Fiber, 2-1/4 OD X 3/8 ID X 1/8	X	X	X
4	183-305	Washer, Steel, 2-1/4 OD X 3/8 ID X 1/8	X	X	X
5	982-224	Lock Washer, 3/8 Split	X	X	X
6	904-234	Blade Bolt, HCS, 3/8 NF X 2-1/4 Ht. Gr. 5	X	X	X

THE SENSATION CORPORATION • OMAHA, NEBRASKA 68110 USA

SENSATION

MODEL 3XWP-0

WEAR PLATE KIT



ITEM	PART NO.	DESCRIPTION
1	013-305	Wear Plate
2	901-186	Hex Cap Screw 1/4 NC X 3/4
3	982-181	Lock Washer 1/4 Split
4	960-181	Nut 1/4 NC Hex

MOUNTING INSTRUCTIONS

1. Place the wear plate along the side of the deck, flush with the bottom and the weld nuts on top. Mark the two holes to be drilled.
2. Drill the holes with a 5/16" drill bit.
3. Mount the wear plate with the hex cap screws pointing out of the deck as illustrated.
4. Repeat on other side of deck

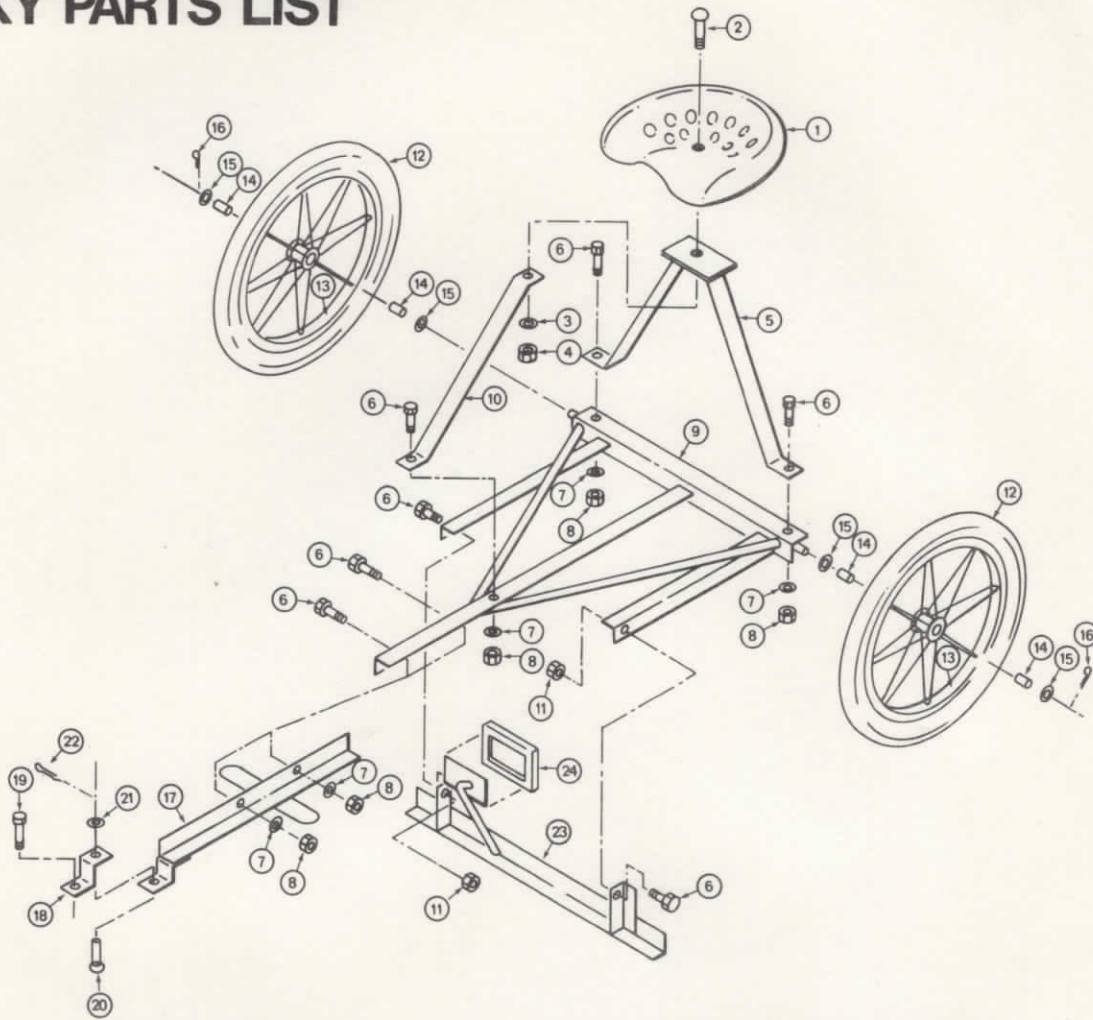
THE SENSATION CORPORATION • OMAHA, NEBRASKA 68110 USA

Form No. 113-329

SENSATION

MODEL 3XSU-0

SULKY PARTS LIST



ITEM NO. PART NO. DESCRIPTION

ITEM NO. PART NO. DESCRIPTION

1	303-201	Seat
2	911-278	Carriage Bolt 1/2 NC x 1 1/2
3	982-271	Lock Washer 1/2 Split Type
4	960-271	Nut 1/2 NC Hex
5	021-212	Seat Bracket
6	901-205	Hex Cap Screw 5/16 NC x 3/4
7	982-200	Lock Washer 5/16 Split Type
8	960-200	Nut 5/16 NC Hex
9	021-210	Frame
10	023-247	Seat Support
11	964-200	Nut 5/16 NC Hex 2 Way Lock
12	082-118	Wheel & Tire Assembly Includes #14
	263-201	Tire Only — 20 x 2.125
	263-202	Tube Only — 20 x 2.125
	263-205	Rim Liner Only

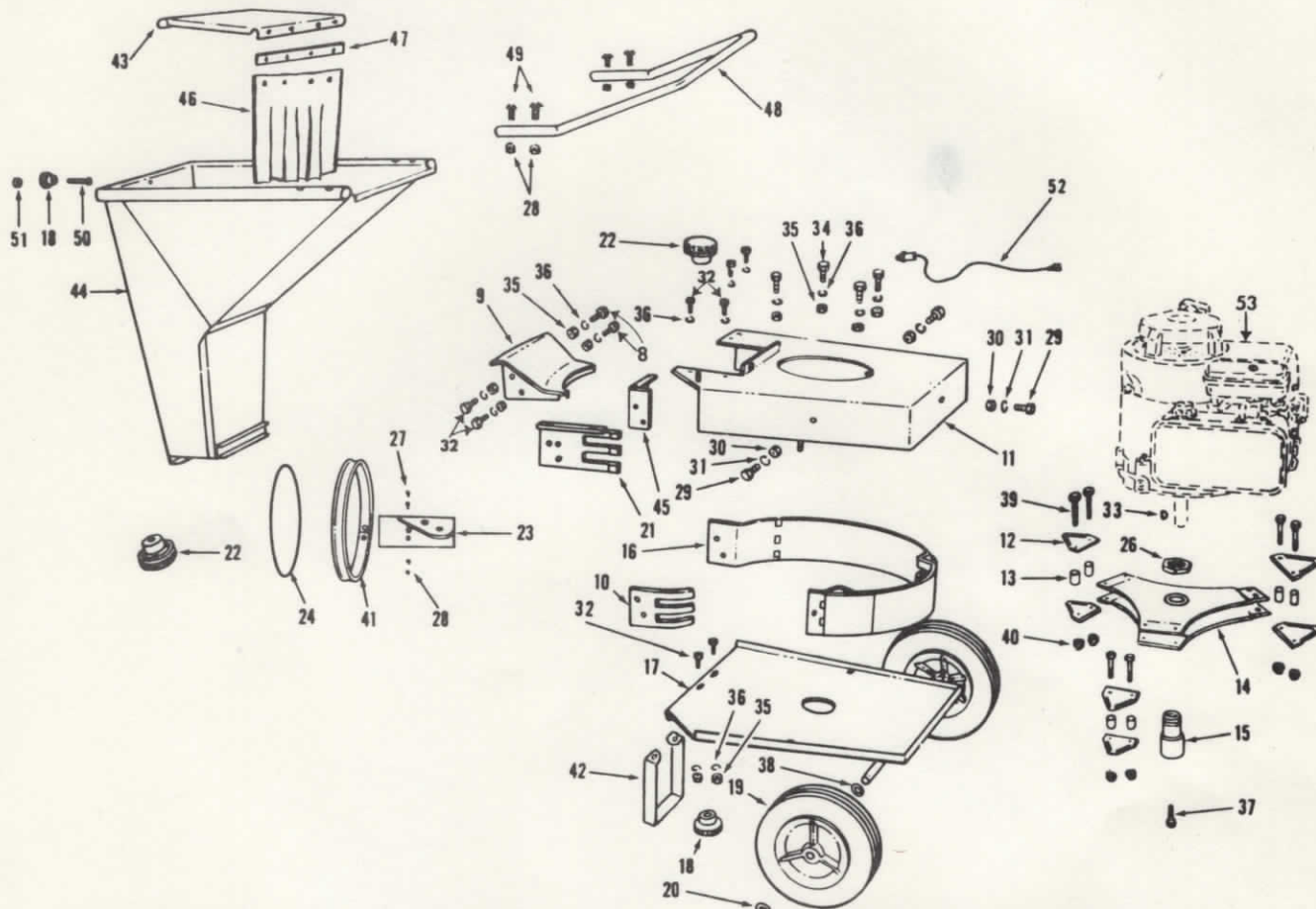
13	082-117	Wheel — 20" Spoke Includes #14
14	243-212	Bearing
15	999-588	Washer 5/8 ID x 1 1/2 OD x 16 GA
16	992-145	Cotter Pin 5/32 x 1
17	021-211	Tongue Extension
18	023-244	Tow Plate
19	901-211	Hex Cap Screw 5/16 NC 1 3/4
20	993-309	Clevis Pin 1/2 x 1 3/8 Special Head
21	981-271	Washer 1/2 SAE Flat
22	999-571	Clinch Pin 3/16 x 1
23	061-204	Brake Bar
24	323-802	Foot Pad

Form No. 113-220

SENSATION

MODELS 04S3-0 (630-3)
04S5-0 (630-5)

SHREDDER / BAGGER

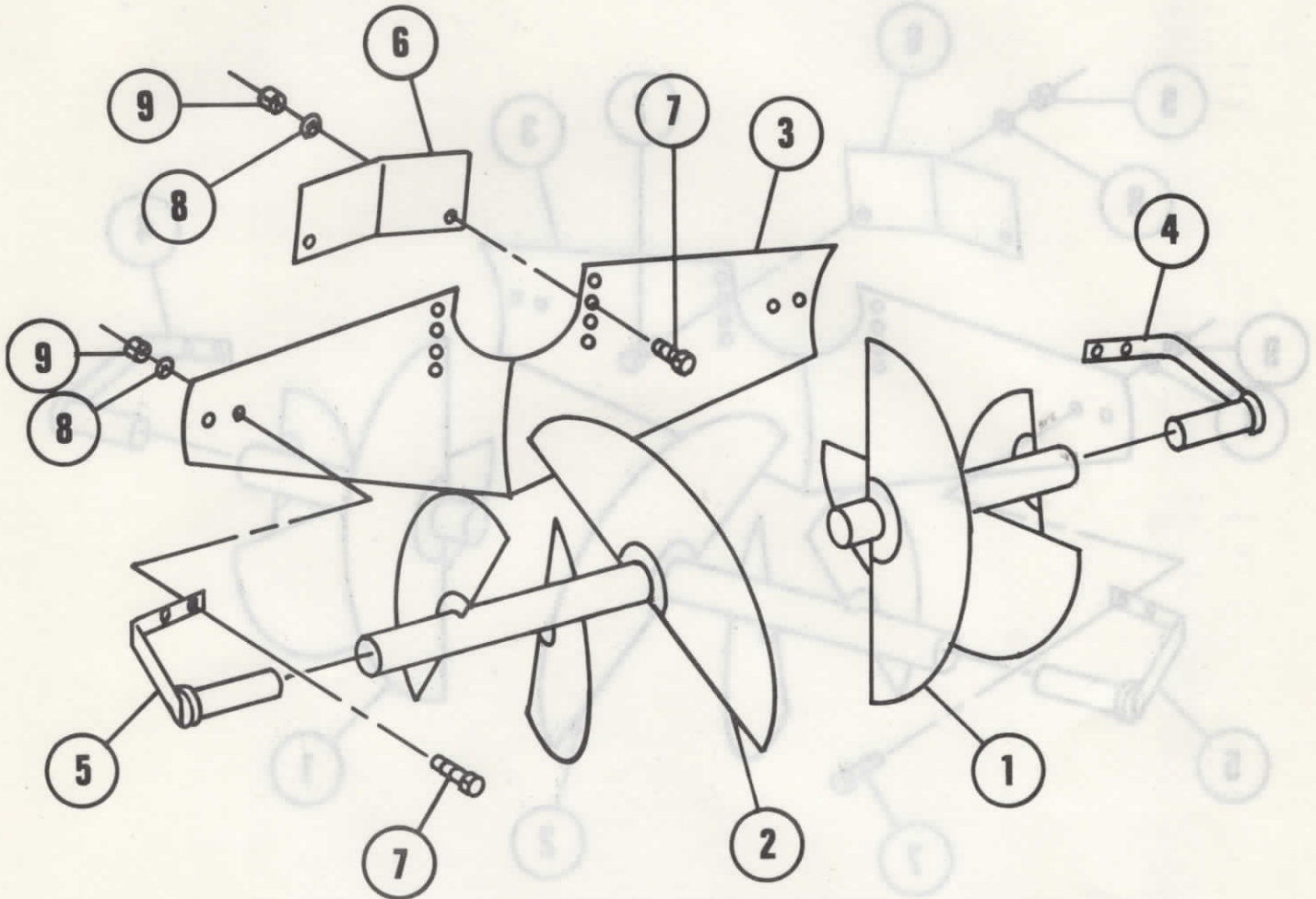


Key No.	Part No.	Description
8	901 209	$\frac{3}{16}$ -18x1 $\frac{1}{4}$ Hex Hd. Mach. Bolt
9	131 701	Inlet Ass'y - Body
10	023 703	Breaker-Inlet
11	131 702	Motor Base Ass'y
12	123 701	Knife
13	273 701	Spacer - Blade
14	121 701	Rotor Assembly
15	183 701	Hub for 3 $\frac{1}{2}$ HP
15	183 702	Hub for 5 HP
16	021 701	Liner
17	021 702	Bottom Pan Assembly
18	999 450	Knob - Small
19	083 301	Wheel
20	323 004	Hub Cab - Tinnerman
21	023 706	Breaker - Outlet
22	323 001	Knob - Large
23	023 702	Bagger Mounting Plate
24	323 702	O-Ring, Bagger
26	999 451	Jam Nut - L.H.
27	923 184	$\frac{1}{4}$ -20x $\frac{1}{2}$ Rd. Hd. Mach. Screw
28	964 181	$\frac{1}{4}$ -20 Self-Lock Nut
29	903 185	$\frac{1}{4}$ -20x $\frac{3}{8}$ Hex. Hd. Cap Sc. - Ht. Tr.
30	960 181	$\frac{1}{4}$ -20 Hex Nut

Key No.	Part No.	Description
31	982 181	$\frac{1}{4}$ Spring Lock Washer
32	901 205	$\frac{3}{16}$ -18x $\frac{3}{4}$ Hex Hd. Mach. Bolt
33	996 312	#6 Woodruff Key
34	901 209	$\frac{3}{16}$ -18x1 $\frac{1}{4}$ Hex Hd. Mach. Bolt
35	960 200	$\frac{3}{16}$ -18 Hex Nut
36	982 200	$\frac{1}{4}$ Spring Lock Washer
37	904 229	$\frac{3}{8}$ -24x1" Hex Soc. Hd. Cap Sc.
38	999 416	$\frac{7}{8}$ x $\frac{23}{64}$ x 13 Ga. Narrow Mach. Bush.
39	904 211	$\frac{3}{16}$ -24x1 $\frac{3}{4}$ Hex Hd. Cap Sc. - Ht. Tr.
40	965 200	$\frac{3}{16}$ -24 Self Lock Nuts
41	023 701	Ring Bagger
42	023 704	Strut
43	033 701	Lid - Hopper
44	031 701	Hopper Assembly
45	023 705	Cover
46	323 703	Rubber Safety Deflector
47	033 702	Deflector Clamp
48	253 701	Chrome Handle
49	923 191	$\frac{1}{4}$ -20x1 $\frac{1}{2}$ R Rd. Hd. Machine Screw
50	911 213	$\frac{3}{16}$ -18x2 $\frac{1}{2}$ R Carriage Bolt
51	964 200	$\frac{3}{16}$ -18 Self Lock Nut
52	053 701	Safety Switch - Hopper
53	013 305	3 $\frac{1}{2}$ HP engine
53	013 311	5 HP engine

SENSATION MODEL 42V9-0 (4-TRA)

TIL - ROW PARTS LIST



The following parts are available from TIL-ROW Inc., 14206 Industry, Houston, Texas 77053.

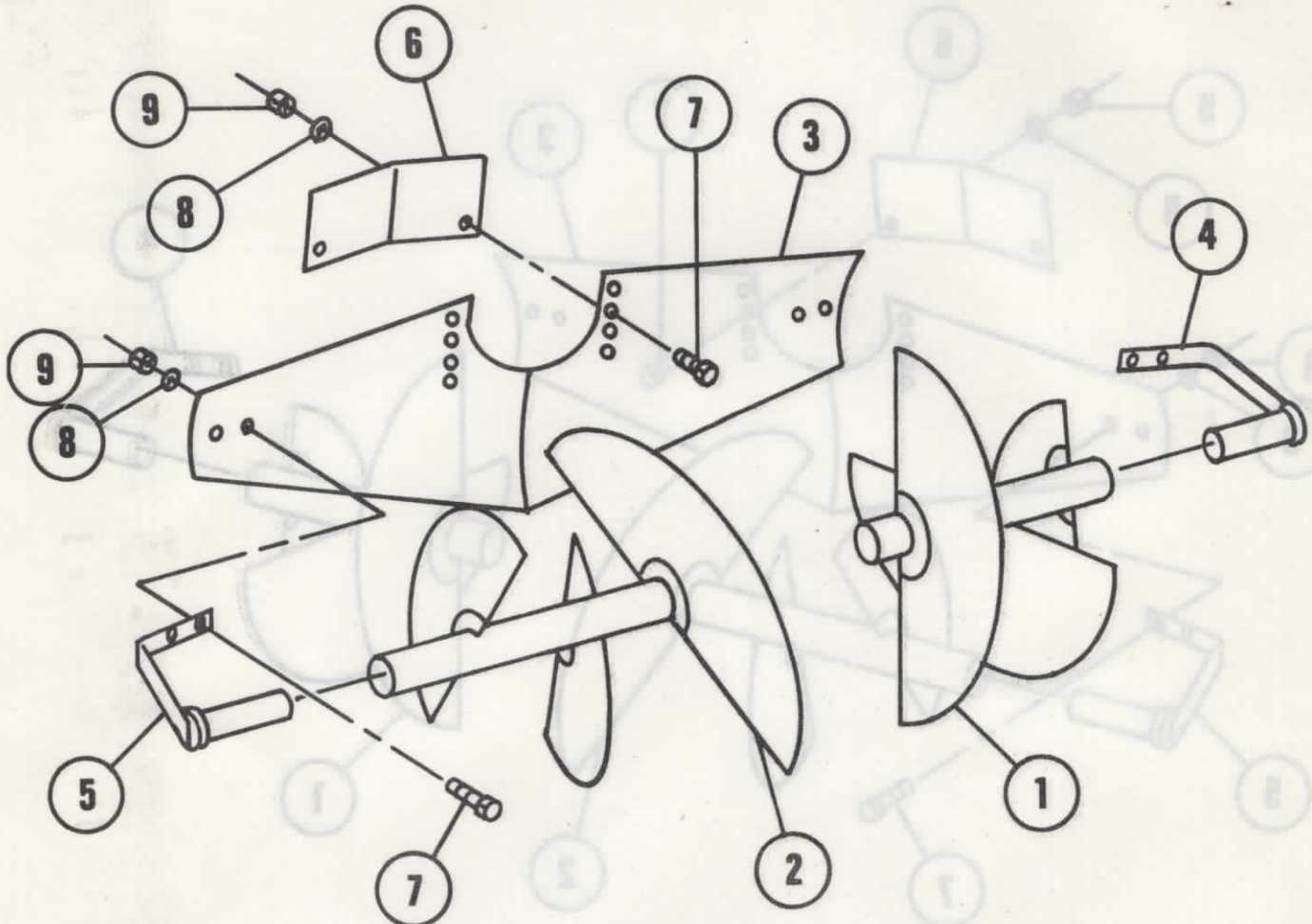
Item	Part No.	Description
1	JT-1L	Left Hand Cultivator Blade
2	JT-1R	Right Hand Cultivator Blade
3	JT-3	Bedder Plate
4	JT-2L	Left Hand Bedder, Bracket
5	JT-2R	Right Hand Bedder, Bracket
6	JT-4	Adjustment Plate
7	Comm.	Bolt 1/4 NC X 3/4
8	Comm.	Lock Washer 1/4
9	Comm.	Hex Nut 1/4 NC

Form No. 113-406

Note: Specify 1" or 1-1/4" Dia. Drive Shaft when ordering.

SENSATION MODEL 42V9-0 (4-TRA)

TIL - ROW PARTS LIST



The following parts are available from TIL-ROW Inc., 14206 Industry, Houston, Texas 77053.

Item	Part No.	Description
1	JT-1L	Left Hand Cultivator Blade
2	JT-1R	Right Hand Cultivator Blade
3	JT-3	Bedder Plate
4	JT-2L	Left Hand Bedder, Bracket
5	JT-2R	Right Hand Bedder, Bracket
6	JT-4	Adjustment Plate
7	Comm.	Bolt 1/4 NC X 3/4
8	Comm.	Lock Washer 1/4
9	Comm.	Hex Nut 1/4 NC

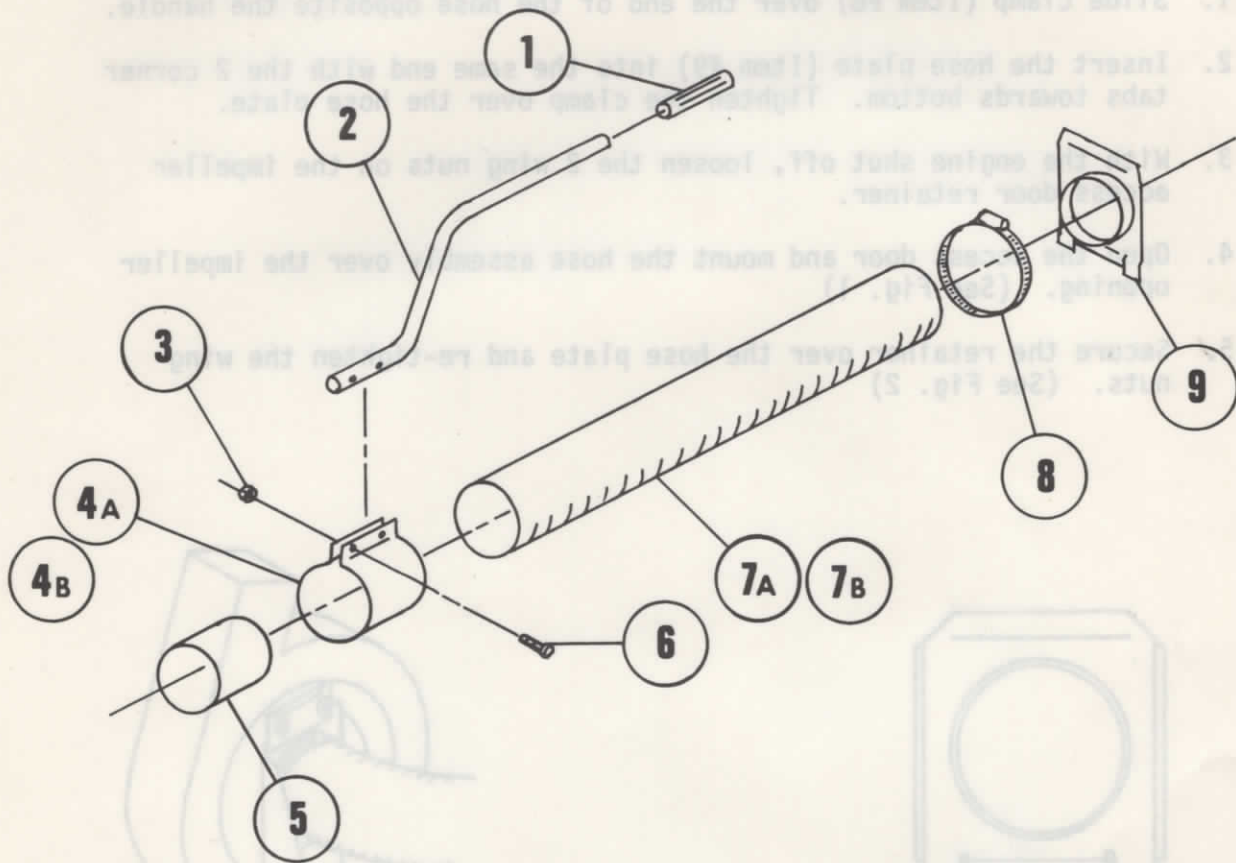
Form No. 113-406

Note: Specify 1" or 1-1/4" Dia. Drive Shaft when ordering.

SENSATION

INTAKE HOSE KIT - VAC

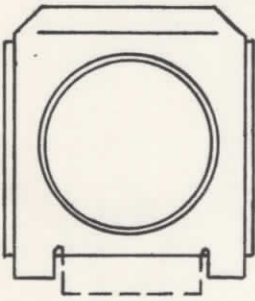
MODELS NO: 20300 (Standard)
20301 (Heavy Duty)



Ref. No.	Part No.	Description	Model Used On	
			20300	20301
1	60060	Grip	X	X
2	60322	Handle	X	X
3	60034	Nut 5/16 NC	X	X
4A	60318	Clamping Collar (STD.)	X	
4B	60447	Clamping Collar (H.D.)		X
5	60316	Cuff	X	X
6	60168	Bolt 5/16 NC x 1-1/2	X	X
7A	60325	Hose 6" x 120" (STD.)	X	
7B	60446	Hose 6" x 120" (H.D.)		X
8	60313	Clamp 6"	X	X
9	40323	Hose Plate	X	X

MOUNTING INSTRUCTIONS

1. Slide clamp (Item #8) over the end of the hose opposite the handle.
2. Insert the hose plate (Item #9) into the same end with the 2 corner tabs towards bottom.
3. With the engine shut off, loosen the 2 wing nuts on the impeller access door retainer.
4. Open the access door and mount the hose assembly over the impeller opening. (See Fig. 1)
5. Secure the retainer over the hose plate and re-tighten the wing nuts. (See Fig. 2)



Part No.	Description	Model Used On
40323	Hose Plate	X
80313	Clamp 8"	X
80318	Hose 8" x 150" (H.D.)	X
80325	Hose 8" x 120" (STD.)	X
80189	Bolt 5/16 NC x 1-1/2"	X
80316	Wing Nut	X
80317	Clamping Collar (H.D.)	X
80318	Clamping Collar (STD.)	X
80319	Ret 2 1/8 NC	X
80320	Handle	X
80321	Grip	X

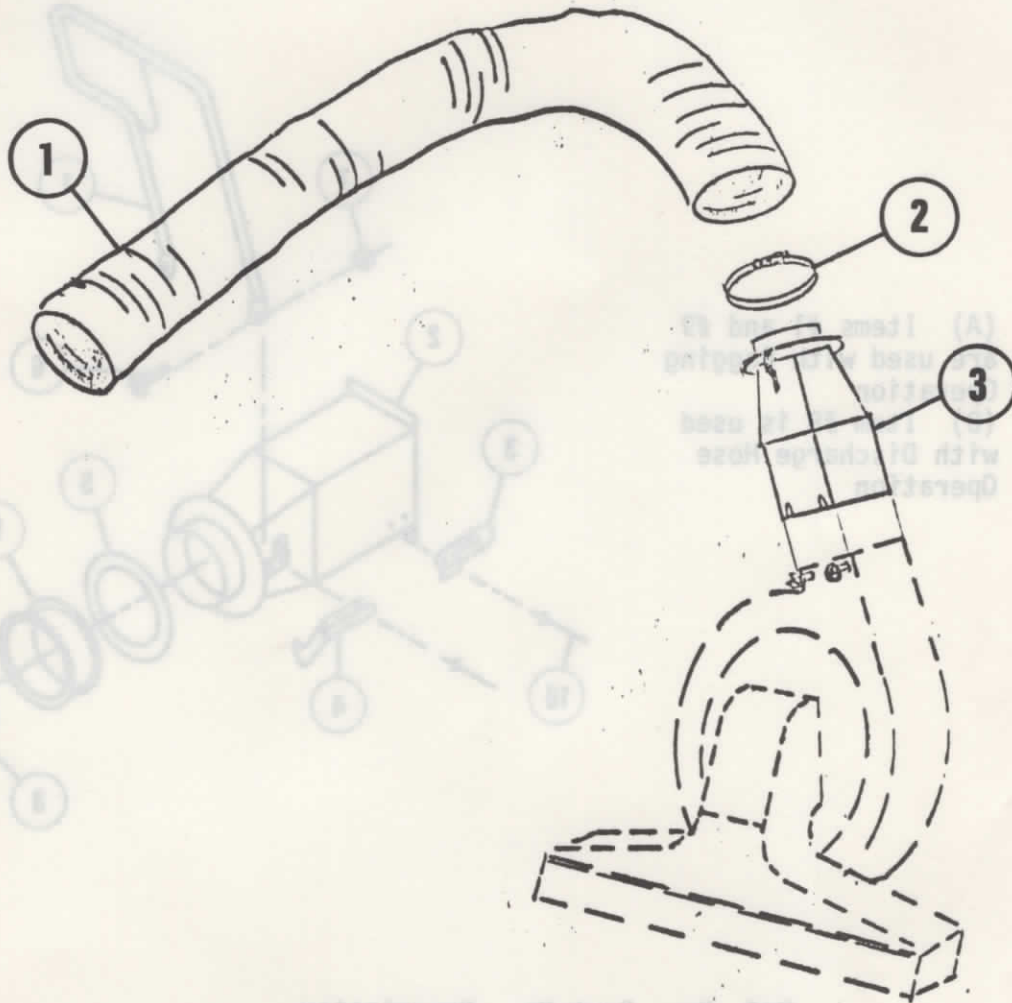
Fig. 1

Fig. 2

SENSATION

HOSE DISCHARGE KIT - VAC

MODELS 20302 (Standard)
20303 (Heavy Duty)



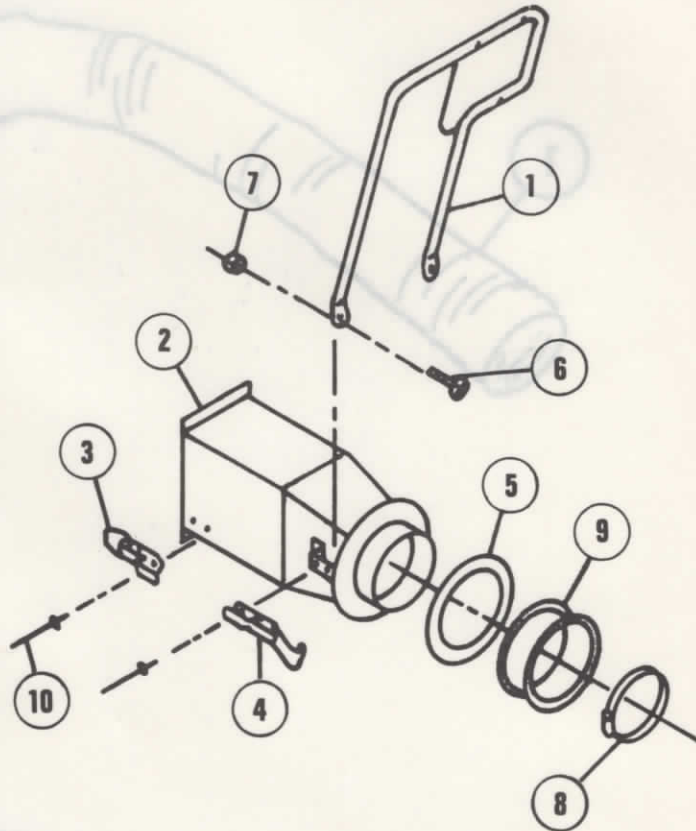
REF NO.	PART NO.	DESCRIPTION	MODEL USED ON	
			20302	20303
1	60325	Standard Hose	X	
	60446	Heavy Duty Hose		X
2	60313	Clamp 6"	X	X
3	40309	Transition	X	X

NOTE: Use existing nuts on housing to secure transition to housing.

SENSATION

TRANSITION KIT - BLOWER

NOTE: (A) Items #1 and #9
are used with Bagging
Operation
(B) Item #8 is used
with Discharge Hose
Operation

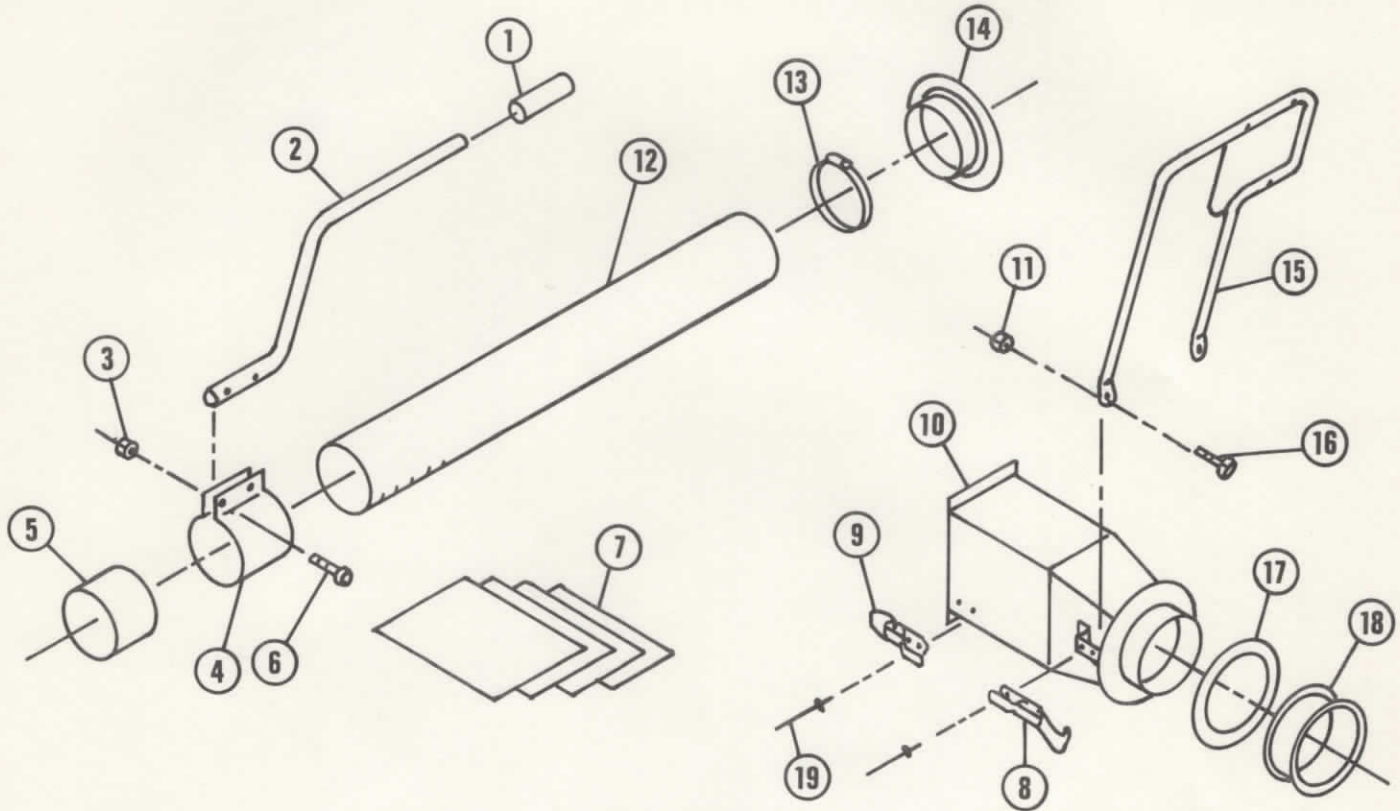


Ref. No.	Part No.	Description
1	40366	Bag Guard Assembly
2	40510	Transition Includes #3, #4, & #5
3	60632	Catch HC-200
4	60327	Catch HC-255
5	60241	Gasket
6	901-185	Bolt, 1/4-20 x 5/8 HCS
7	971-181	Nut, 1/4-20 Flange Lock
8	60313	Clamp 6"
9	60314	Bag Sleeve
10	999-353	Pop Rivet 1/8

SENSATION

BLOWER BAGGING KIT

Model 20304 Standard
20305 Heavy Duty



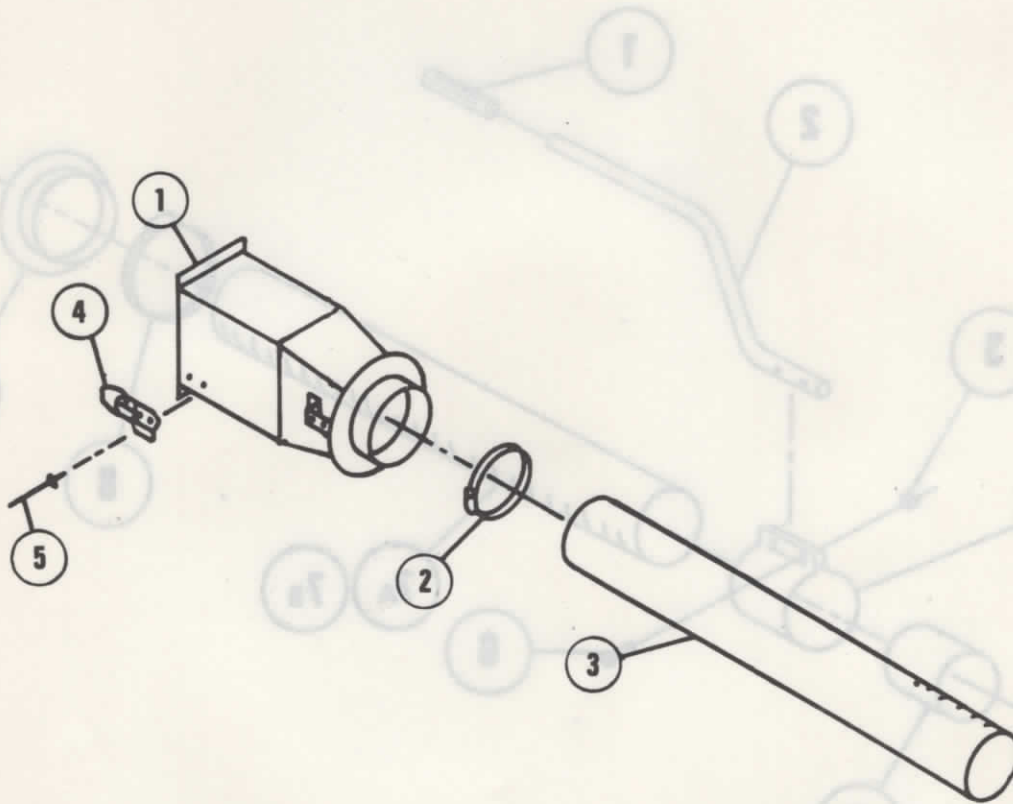
Ref No.	Part No	Description
1	60060	Grip, Handle
2	60322	Handle
3	970-200	Nut, Flange 5/16 NC
4	60318	Clamp Collar 6-1/4 ID (For Model 20304)
	60447	Clamp Collar 6-1/2 ID (For Model 20305)
5	60316	Cuff
6	901-210	Hex Cap Screw 5/16 NC x 1-1/2
7	40336	Perforated Bags
8	60327	Catch HC-255
9	60632	Catch HC-200
10	40510	Transition (Includes #8, 9 & 17)
11	971-181	Nut, Flange 1/4 NC
12	60325	Hose, 6" x 120" (For Model 20304)
	60446	Hose, H.D. 6" x 120" (For Model 20305)
13	60313	Clamp 6"
14	40319	Hose Plate
15	40366	Bag Guard Assembly
16	901-185	Hex Cap Screw 1/4 NC x 5/8
17	60241	Gasket
18	60315	Sleeve
19	999-353	Pop Rivet 1/8

Form No. 80342 7/79

SENSATION

HOSE DISCHARGE KIT - BLOWER

MODEL 20306 (Standard)
20338 (Heavy Duty)

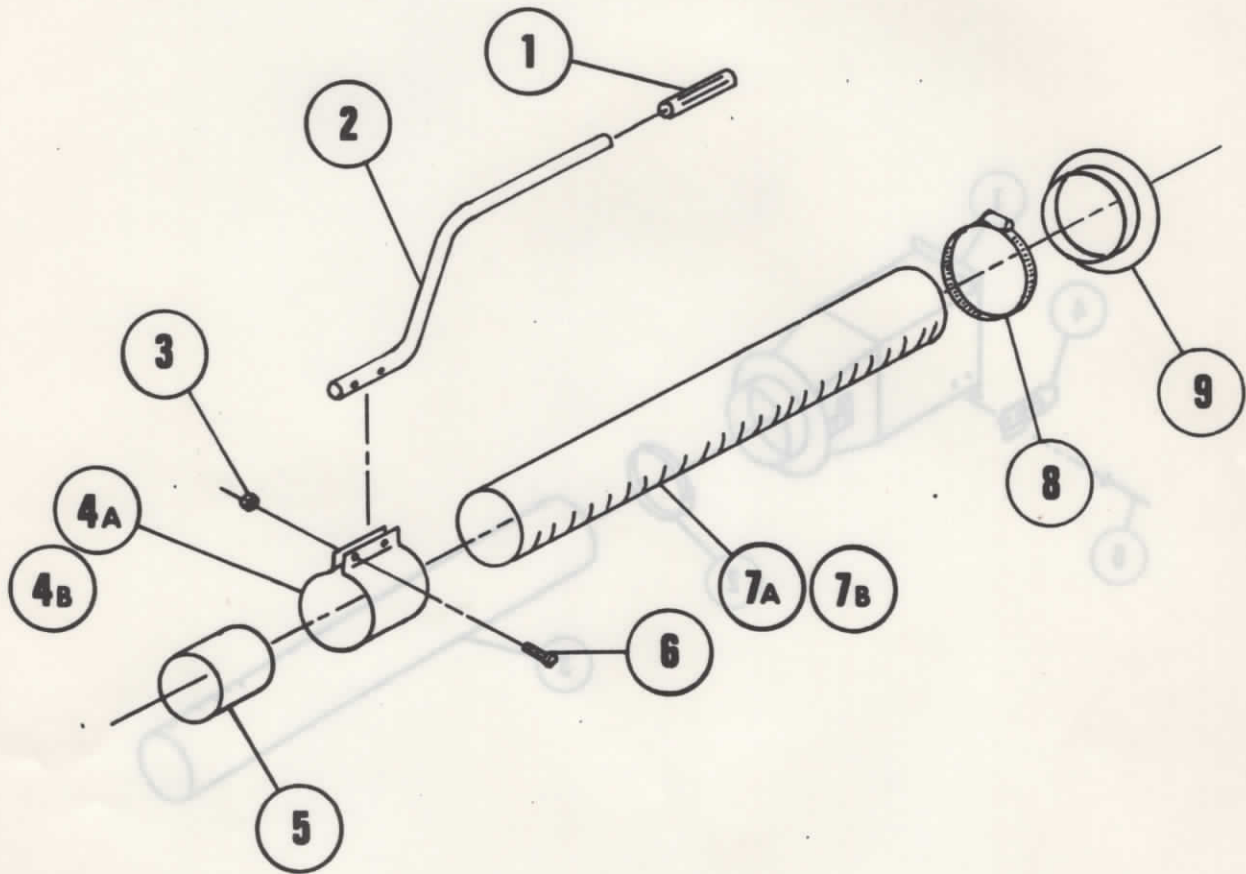


Ref. No.	Part No.	Description
1	40557	Transition (Includes Item #4)
2	60313	Clamp 6"
3	60325	Hose 6" x 120" (For Model 20306)
	60446	Hose 6" x 120" (For Model 20338)
4	60632	Catch HC-200
5	999-353	Pop Rivet 1/8"

SENSATION

MODELS: 20371 (Standard)
20372 (Heavy Duty)

INTAKE HOSE KIT - BLOWER



Ref. No.	Part No.	Description	Model Used On	
			20371	20372
1	60060	Grip	X	X
2	60322	Handle	X	X
3	60034	Nut 5/16 NC	X	X
4A	60318	Clamping Collar (STD.)	X	
4B	60447	Clamping Collar (H.D.)		X
5	60316	Cuff	X	X
6	60168	Bolt 5/16 NC x 1-1/2	X	X
7A	60325	Hose 6" x 120" (STD.)	X	
7B	60446	Hose 6" x 120" (H.D.)		X
8	60313	Clamp 6"	X	X
9	40319	Hose Plate	X	X